



# 信義玻璃控股有限公司

## XINYI GLASS HOLDINGS LIMITED *Since 1988*

(Incorporated in the Cayman Islands with limited liability)

Stock code: 00868.hk

信譽至上，義氣爭榮，  
自強不息，善行天下。



### Environmental, Social and Governance Report

# 2025

Hang Seng  
Index Constituents

SHANGHAI  
CONNECT

SHENZHEN  
CONNECT



# CONTENTS

## 2 ABOUT THIS REPORT

## 4 ABOUT XINYI GLASS

### 11 1. TRANSPARENT CORPORATE GOVERNANCE

- 11 Board Statement
- 12 Transparent and Effective ESG Governance
- 14 Stakeholder Engagement on Material Issues
- 16 Materiality Assessment
- 18 ESG Performance and External Recognition
- 20 Integrity in Governance and Business Ethics

### 23 2. GREEN PRODUCTS UNDER SUSTAINABLE MANUFACTURING

- 23 Green Production and Environmental Management
- 25 Green Finance and Product Innovation
- 31 To Create Value for Customer Continuously

### 38 3. LOW-CARBON TRANSITION AND CLIMATE RESILIENCE

- 38 Climate Risk Identification and Management
- 41 Climate Resilience
- 44 Setting Up of Carbon Management Leading Team
- 51 Energy-saving and Emission Reduction by Strengthening Resource Management

### 61 4. CREATING A PEOPLE-CENTRIC, DIVERSITY-RESPECTING AND INCLUSIVE WORKPLACE

- 61 From Legal Compliance to Institutional Safeguards
- 65 From Localized Hiring to Fair Treatment
- 68 Empowering Women's Development
- 69 Comprehensive Employee Care
- 71 Talents are Our Most Valuable Resources
- 75 Hold Fasting the "Safety" Bottom Line

### 79 5. SAFEGUARDING AND MANAGING THE INTERNAL SUPPLY CHAIN

- 79 Sustainable Supply Chain
- 81 A Transparent and Open Procurement Environment

### 82 6. ACTIVELY PARTICIPATING IN CHARITY ACTIVITIES AND GIVING BACK TO THE COMMUNITY

- 84 Respecting Local Voices to Co-create a Sustainable Future

## 88 APPENDIX 1: GRI INDEX

## 92 APPENDIX 2: ESG KPI INDEX OF SEHK

## 97 APPENDIX 3: FEEDBACK ON THE REPORT



# ABOUT THIS REPORT

## REPORT OVERVIEW

This report is the tenth annual Environmental, Social and Governance Report (the “**Report**”) published by Xinyi Glass Holdings Limited (“**Xinyi Glass**”, the “**Group**”, or “**we**”, stock code: 00868). The Report follows the principles of importance, quantification, balance and consistency, and aims to transparently disclose the Group’s management approach, performance and commitment to the future in relation to ESG matters.

The Report complies with the mandatory disclosure requirements and the “comply or explain” provisions of the Environmental, Social and Governance Reporting Code (the “**ESG Code**”) set out in Appendix C2 to the Listing Rules of The Stock Exchange of Hong Kong Limited (the “**SEHK**”). Readers are encouraged to read the Report together with the Xinyi Glass 2025 Annual Report for a more comprehensive understanding of the Group’s corporate information. The Report is prepared in both Chinese and English. In the event of any discrepancy between the Chinese and English versions, the Chinese version shall prevail.

## REPORTING BOUNDARY AND SCOPE

The organizational boundary of the Report covers Xinyi Glass Holdings Limited and its subsidiaries (collectively, the “**Group**”), primarily focusing on the operations over which we exercise control. The operational boundary mainly covers our production bases in Greater China region and overseas.

For clarity of reporting scope, the content and data in the Report do not include the following separately listed related companies:

Xinyi Solar Holdings Limited (SEHK Stock Code: 00968)

Xinyi Energy Holdings Limited (SEHK Stock Code: 03868)

Xinyi Electric Storage Holdings Limited (SEHK Stock Code: 08328)

The reporting period is from 1 January 2025 to 31 December 2025 (the “**Reporting Year**”), which is consistent with the cycle of the Annual Report.

## BASIS OF PREPARATION AND REPORTING PRINCIPLES

The Report is prepared primarily with reference to the following standards:

Primary framework: SEHK ESG Code.

Supplementary reference: The GRI Sustainability Reporting Standards (GRI Standards) published by the Global Reporting Initiative. The corresponding GRI content index is set out in the appendix to the Report.

Climate-related disclosures: In the Report, we have also referred to the proposed framework of the Task Force on Climate-related Financial Disclosures (TCFD) and guiding principles of the IFRS S2 to enhance our climate-related disclosures. The relevant information is based on all reasonable and supportable information available to the Group without undue cost or effort. Where information required under Section D is not provided, it indicates that the Group currently does not have the skills, capabilities or resources to provide such information.

Carbon emissions data calculation: The calculation methodology for carbon-related data is primarily based on the Requirements of the Carbon Emissions Accounting and Reporting for Flat Glass Enterprises in China.

In preparing this Report, we adhere to the following **core principles**:

**Importance:** Through a systematic stakeholder engagement process, we identify ESG issues that have a significant impact on the Group's business and the stakeholders' decisions.

**Quantification:** Key performance data is, wherever possible, accompanied by an explanation of the calculation basis, methodology and assumptions to ensure comparability.

**Balance:** The Report presents the Group's ESG performance in an unbiased manner, including the challenges we face and areas for improvement.

**Consistency:** We strive to maintain consistency in data calculation methodologies and disclosure scope to facilitate year-on-year comparisons. Any changes will be clearly stated in the Report, accompanied by restated historical data.

## INFORMATION RELIABILITY AND EXTERNAL ASSURANCE

The information used in the Report is primarily obtained from the Group's official statistics, annual reports, internal management systems, and collated operational data. The Group has converted to RMB as its reporting currency in 2024. Unless otherwise specified, RMB is the unit for all currency amounts listed in the Report.

The Board is responsible for the truthfulness, accuracy and completeness of the contents of the Report.

## APPROVAL AND PUBLICATION OF THE REPORT

The Report has been formally reviewed and approved by the Board and management of the Company.

In order to fulfil our environmental protection responsibilities, the Group has adopted a paperless principle for both its annual report and the Report since 2020. Electronic versions of all reports are available on the following websites:

Group website: <http://www.xinyiglass.com>

HKExnews website of SEHK: <http://www.hkexnews.hk>

Should you have any questions or suggestions regarding the content of the Report, please feel free to contact us via the following channels:

### **Xinyi Glass Holdings Limited** **Investor Relations Department**

Address: 21/F, Rykadan Capital Tower 135 Hoi Bun Road, Kwun Tong Kowloon, Hong Kong

Tel: +852 3919 2888

Fax: +852 3919 2890

E-mail: [ir@xinyiglass.com.hk](mailto:ir@xinyiglass.com.hk)

## GENERAL INFORMATION OF THE COMPANY

### About Xinyi Glass

Xinyi Glass Holdings Limited (Stock Code: 00868) was established in 1988 and listed on the Main Board of The Stock Exchange of Hong Kong Limited in 2005. As a global leader in the glass industry value chain, the Group is engaged in businesses covering from upstream high-quality float glass to downstream value-added processed products. Its core businesses include high-quality float glass, automotive glass and energy-saving architectural glass. Leveraging an integrated value chain layout and economies of scale, the Group serves markets worldwide.

### Global Operations and Market Leadership

The Group has its operational networks in the world's fastest-growing economic regions. In China, we operate 13 industrial parks, which are strategically located at the Greater Bay Area, Yangtze River Delta Region, Beijing-Hebei-Tianjin Region, Bohai Economic Rim and Western Chengdu-Chongqing Economic Zone, and have two overseas production bases in Malaysia and Indonesia. Those bases occupy a total gross floor area of more than 8.9 million square meters with approximately 16,000 employees.

Our market leadership is reflected in the following:

**Float glass:** We rank first in China and Asia in terms of daily melting capacity, and have core production technologies for high-end float glass with both ultra-thin and ultra-thick specifications, ranging from 0.3 mm to 25.0 mm.

**Automotive glass:** We account for approximately 25% of the global automobile glass aftermarket sector. Our products are sold to more than 140 countries and regions worldwide, and we have established a strategic partnership with many international automotive manufacturers.

**Energy-saving architectural glass:** As a leading manufacturer of Low-E energy-saving architectural glass in China, our products have been used in numerous landmark buildings both domestically and internationally, including Tokyo Skytree in Japan, Passenger Clearance Building of Hong Kong Port of the Hong Kong-Zhuhai-Macao Bridge and Beijing Digital Tower.

### Green Innovation and Sustainability Strategy

Xinyi Glass has adopted “Leading a Green New Life” as its core mission, deeply integrating the sustainability into its product innovation and operating model.

**Green product solutions:** We are committed to the research, development and promotion of products that help our customers achieve energy savings and emission reductions, including SOLACO and SOLAR-X heat-insulating automotive glass and Low-E coated architectural glass, directly assisting downstream customers in addressing climate challenges and improving energy efficiency.

**Green value chain synergies:** As a shareholder of Xinyi Solar (SEHK Stock Code: 00968) and Xinyi Energy (SEHK Stock Code: 03868), the Group has established a green power development model encompassing photovoltaic glass, photovoltaic power stations and energy storage through its related companies. This synergy not only strengthens our green value chain but also supports the Group’s low-carbon transition and energy resilience.

**Promoting low-carbon transition in the industry:** Through green and low-carbon transition, clean and efficient use of resources and digital empowerment, we actively respond to the national “**dual carbon**” strategy and promote the sustainable development of the entire industry.

### Corporate Vision and Value Commitment

Our vision is “To Establish a Remarkable Glass Enterprise and Achievements of World Class Brand”. To this end, we focus not only on creating long-term value for our customers and partners, but also on fulfilling our responsibilities to our employees and society. We offer competitive compensation and benefits, a comprehensive training system, a wide range of cultural and recreational activities and a unique “**family**” culture to care for our employees’ development and foster a diverse and inclusive working environment.

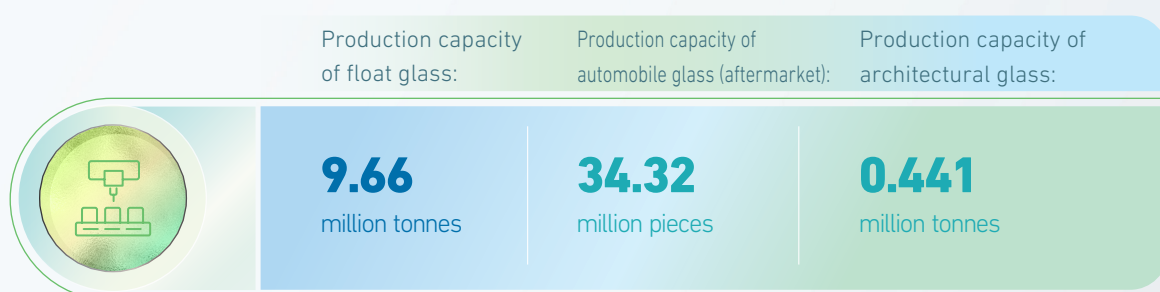
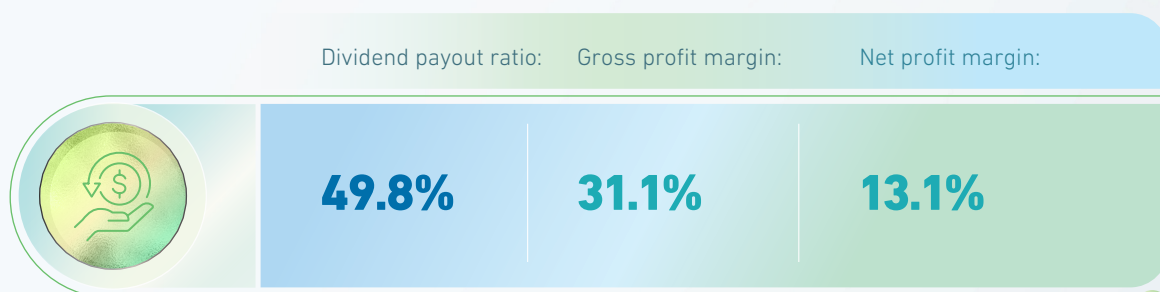
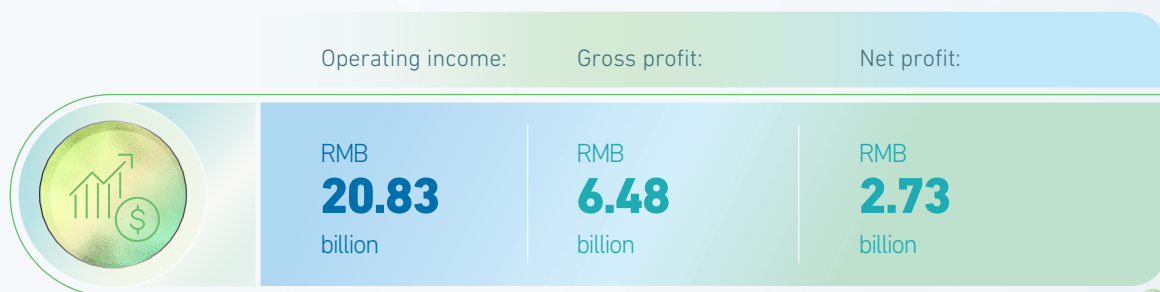
SOME OF THE RELEVANT INDEXES THAT INCLUDED OUR COMPANY (AS OF THE FOURTH QUARTER OF 2025)



恒生指數  
HANG SENG INDEXES

1	Hang Seng Index	17	Hang Seng SCHK Materials & Industrials Index	33	Hang Seng Large-Mid Cap Low Comprehensive Index
2	Hang Seng Index - Commerce & Industry	18	Hang Seng SCHK Materials and Industrials (Investable) Index	34	Hang Seng Large-Mid Cap Equal Weighted Factor Mix (QVLM) Index
3	Hang Seng Equal Weighted Index	19	Hang Seng SCHK Automobile Index	35	Hang Seng Large-Mid Cap Risk Parity Factor Mix (QVLM) Index
4	HSI Stock Connect Hong Kong Index	20	Hang Seng Stock Connect Greater Bay Area Composite Index	36	Hang Seng Stock Connect China Value Comprehensive Index
5	Hang Seng Composite Index	21	Hang Seng Stock Connect Greater Bay Area Industrials Index	37	Hang Seng Stock Connect China Momentum Comprehensive Index
6	Hang Seng Composite Industry Index – Industrials	22	Hang Seng Stock Connect Greater Bay Area New Economy Index	38	Hang Seng Stock Connect China Quality Comprehensive Index
7	Hang Seng Composite LargeCap & MidCap Index	23	Hang Seng Stock Connect Greater Bay Area High Dividend Yield Index	39	Hang Seng Stock Connect China Dividend Yield Comprehensive Index
8	Hang Seng Large-Mid Cap (Investable) Index	24	SCHK High Dividend Yield Index	40	Hang Seng Stock Connect China Low Volatility Comprehensive Index
9	HangSeng Composite MidCap Index	25	Hang Seng High Dividend Yield Index	41	Hang Seng Stock Connect China Low Size Comprehensive Index
10	Hang Seng Composite LargeCap & MidCap Index	26	Hang Seng China High Dividend Yield Index	42	HSI ESG Index
11	Hang Seng Composite MidCap & SmallCap Index	27	Hang Seng SCHK High Dividend Yield Screened Index	43	HSI ESG Enhanced Index
12	Hang Seng Large-Mid Cap (Investable) Index	28	Hang Seng Large-Mid Cap Value Comprehensive Index	44	HSI ESG Enhanced Select Index
13	Hang Seng Stock Connect China 500 Index	29	Hang Seng Large-Mid Cap Momentum Comprehensive Index	45	HSI Low Carbon Index
14	Hang Seng SCHK Mainland China Companies Index	30	Hang Seng Large-Mid Cap Quality Comprehensive Index	46	Hang Seng Climate Change 1.5° C Target Index
15	Hang Seng Stock Connect Hong Kong Index	31	Hang Seng Large-Mid Cap Dividend Yield Comprehensive Index	47	Hang Seng Automotive Index
16	Hang Seng Stock Connect Hong Kong MidCap & SmallCap Index	32	Hang Seng Large-Mid Cap Low Volatility Comprehensive Index		

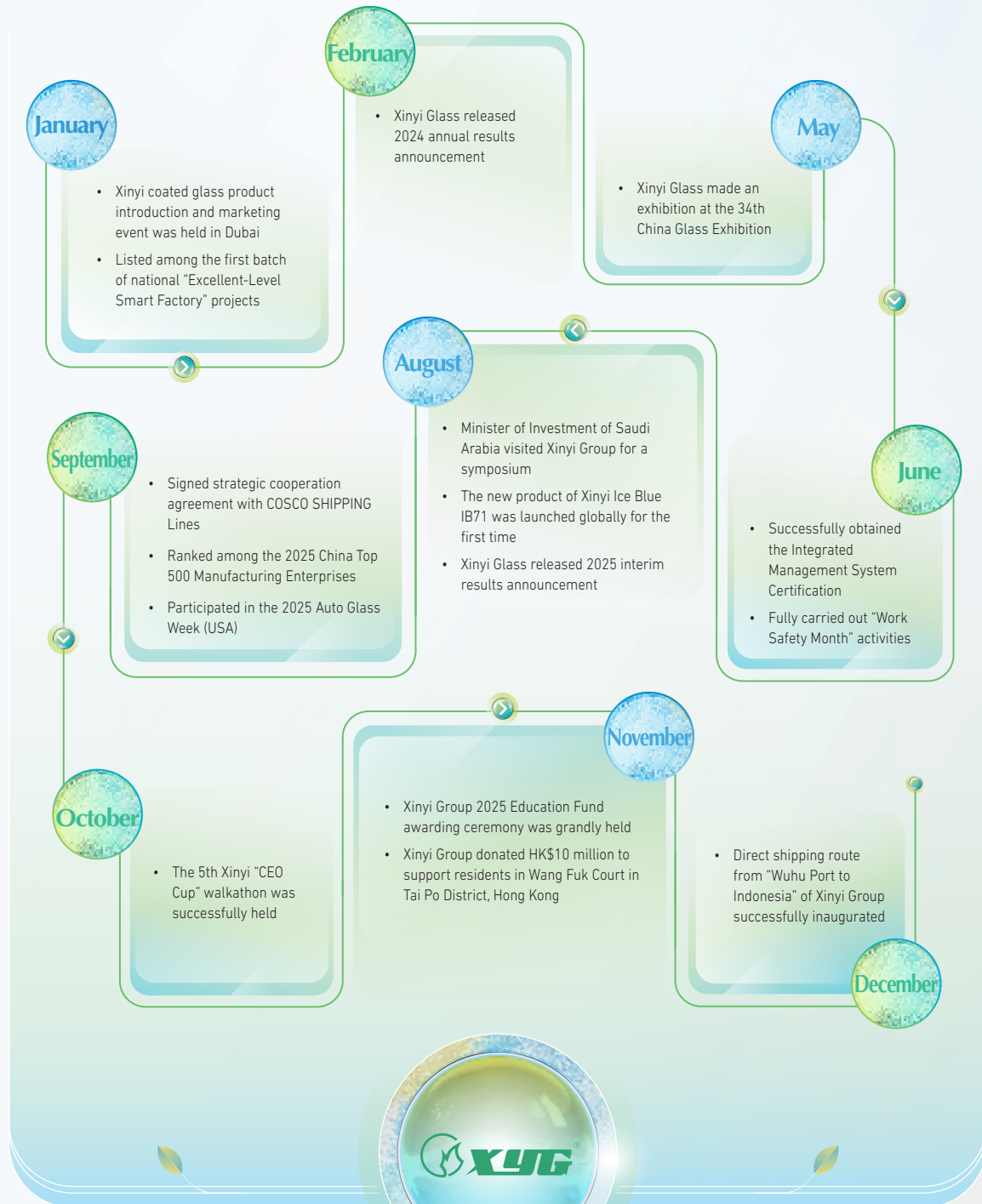
KEY FINANCIAL INFORMATION FOR 2025



ESG HIGHLIGHTS FOR 2025

Green Production	Green Products	Sustainable Procurement
Use of renewable energy <b>46.2</b> GWh	Carbon footprint product certification <b>4</b>	Green procurement commitment ratio <b>28.0%</b>
Usage rate of renewable energy <b>5.1%</b>	Green product certification (company) <b>5</b>	Percentage of supplier integrity agreements <b>100.0%</b>
New green factory certification <b>1</b>	Green building materials certification (company) <b>4</b>	Trustworthy operation letter ratio <b>100.0%</b>
Recycling rates of non-hazardous waste <b>72.0%</b>		
Talent Development	Staff Care	
Total Training hours <b>94,716</b> hours	The amount of Xinyi Education Fund <b>RMB 3.28</b> million	The amount of Caring Fund <b>RMB 1.74</b> million
Percentage of trainees <b>99.9%</b>	Number of students funded by the Education Fund <b>821</b> persons	Number of people supported by the Caring Fund <b>227</b> persons
Proportion of female employees with professional titles <b>10.0%</b>	Occupational safety training rates <b>100.0%</b>	Employee satisfaction score <b>83</b> points
Proportion of female senior management <b>11.0%</b>	Fatality rate per thousand employees <b>0%</b>	
Employee retention rate <b>71.0%</b>		
Anti-corruption	Social Welfare	Outstanding Customer Service
Integrity training coverage rate <b>3,610</b> persons	Total amount of donations <b>RMB 10.86</b> million	ISO9001 certification ratio <b>100.0%</b>
Ratio of Integrity Procurement Undertaking <b>100.0%</b>	Participants in social activities <b>1,072</b> persons	
Number of training sessions <b>29</b>	Social activities participation hours <b>1,903</b> hours	

MAJOR EVENTS OF THE COMPANY IN 2025



MISSION



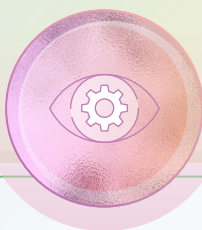
**ENTERPRISE VISION**

Establish a Remarkable  
Glass Enterprise and  
Achievements of  
World Class Brand



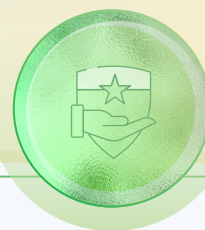
**ENTERPRISE MISSION**

Leading a Green New Life



**CORE VALUES**

Trust, Integrity, Passion  
and Benevolence



# 1. TRANSPARENT CORPORATE GOVERNANCE

## BOARD STATEMENT

The board of directors (the “**Board**”) of Xinyi Glass Holdings Limited (the “**Company**”) firmly believes that outstanding Environmental, Social and Governance (“**ESG**”) performance is the cornerstone for the Group to achieve long-term resilience and create sustainable value. The Board has **ultimate responsibility** for the Group’s ESG matters and is committed to deeply integrating sustainability into both corporate strategy and daily operations.

### A Robust ESG Governance Structure

To ensure effective oversight, the Board serves as the highest governing body for the Group’s ESG strategy and risk management. Its responsibilities include: (i) approving the ESG vision, strategy and key policies of the Group; (ii) evaluating and managing ESG-related risks, particularly climate-related risks, and ensuring their incorporation into the Group’s overall risk management framework; (iii) reviewing progress towards ESG targets and **linking compensation of relevant senior management to key ESG performance indicators (such as emission reduction targets and safety production)** to ensure accountability; and (iv) approving the content of the annual ESG Report to ensure that it fairly and accurately reflects the Group’s performance. The Board has delegated authority to **a cross-functional management committee led by the Chief Executive Officer**, which is responsible for formulating specific action plans, advancing implementation of targets and monitoring performance. This committee reports regularly to the Board, forming an effective governance model that combines top-down decision-making with bottom-up execution.

### Stakeholder Engagement and Management of material issues

The Group maintains active communication with internal and external stakeholders through various channels, including general meetings, investor conferences, customer feedback, supplier audits and employee surveys. The Board personally reviews the **results of the materiality assessment** each year to identify the ESG issues that are most critical to the Group’s business and its stakeholders. With respect to these priority issues (such as climate change, energy management, product responsibility and talent development), the Board guides management to establish a clear strategic direction, specific targets and actionable pathways.

### Focusing on Climate Action and Future Development

The Board confirms that it has conducted a thorough review of climate-related risks and opportunities with reference to the recommendations of the **Task Force on Climate-related Financial Disclosures (TCFD)** and IFRS S2. Since 2021, we have continuously strengthened our efforts in and monitoring work of **energy conservation and emission reduction, safety production and ESG governance structures**. Looking ahead, the Board is committed to staying abreast of global sustainability trends and will adjust and enhance its response strategies as appropriate to ensure that the Group maintains a competitive edge in the transition to a low-carbon economy.

This Environmental, Social and Governance Report elaborates on the sustainability management and performance of Xinyi Glass for the period from 1 January 2025 to 31 December 2025 (the “**Reporting Period**”). The Report was reviewed and approved by the Board on 21 April 2026.

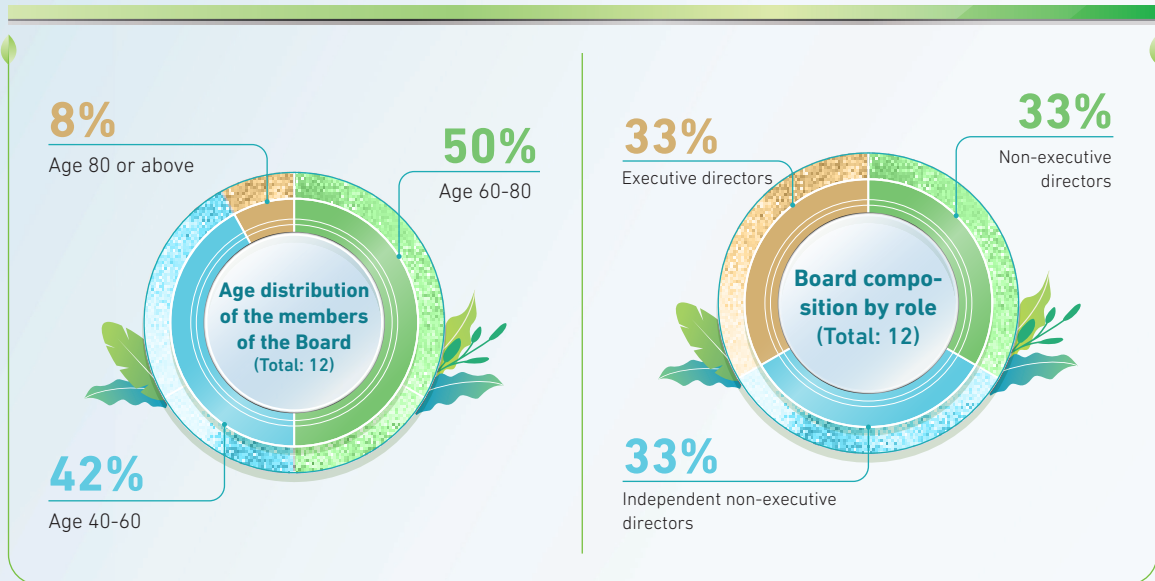
# 1. TRANSPARENT CORPORATE GOVERNANCE

## TRANSPARENT AND EFFECTIVE ESG GOVERNANCE

The Group has established a three-tier ESG governance structure led by the Board and executed across management levels, ensuring that ESG strategy and risk management are deeply integrated into business operations and long-term development.

### The Board: Highest Oversight and Decision-Making Body

As the highest decision-making body for ESG matters, the Board is responsible for approving the Group's ESG vision, strategy and key policies, as well as overseeing their implementation. To ensure professionalism and a wide range of views, the current Board comprises four executive directors, four non-executive directors, and four independent non-executive directors, including one female director. The age distribution of the Board members is balanced, and they have extensive experience and solid expertise. The audit committee, remuneration committee and nomination committee (whose responsibilities are detailed on pages 24–25 of the 2025 annual report) also collaborate to strengthen corporate governance within their respective terms of reference.



### Management Committee: Core Execution and Coordination Level

The Board has delegated authority to the management committee led by the Chief Executive Officer, and the committee is responsible for overseeing the daily operations and strategy execution of the Group. To systematically advance ESG efforts, the management committee is dedicated to refining ESG targets, driving cross-functional collaboration, and ensuring the effective allocation of resources, thereby enhancing overall ESG management efficiency.

**Dedicated Working Groups: Frontline Execution and Performance Implementation Level**

To achieve specific objectives, the Group has successively established a carbon management leading team, an internal control center and a safety committee, which, together with the public utilities department, jointly implement the ESG action plans formulated by the management committee. These dedicated working groups comprise management-level and frontline employees from relevant departments. To ensure target achievement, ESG-related key performance indicators (KPIs) are assigned a weight of 50% to 55% in their annual performance assessments, which are directly linked to compensation. This mechanism reinforces a “top-down” transmission of accountability, ensuring that ESG principles are translated into concrete actions.



**Reporting and Continuous Improvement Mechanism**

Each dedicated working group reports regularly to the Board on the progress of ESG targets, risk management status and performance outcomes through the management committee. This reporting mechanism ensures that the Board can adequately review and manage ESG-related risks, and actively participate in the ESG materiality assessment and annual report review process, promoting the Group’s continuous improvement.

## STAKEHOLDER ENGAGEMENT ON MATERIAL ISSUES

Xinyi Glass firmly believes that systematic and in-depth stakeholder engagement is the cornerstone of identifying and managing sustainability-related risks and opportunities. Through institutionalized and diversified communication channels, we maintain ongoing communication with key stakeholders, with the aim of accurately understanding their expectations and concerns regarding environmental, social, and governance (ESG) issues. These feedback serve as a critical basis for formulating our medium-to-long-term development strategies, conducting materiality assessments, and deeply integrating ESG factors into our corporate decision-making processes.

### Stakeholders' Engagement and Expectation Management

#### Stakeholder Groups

#### Highly Important Issues and Expectations

#### Key Communication and Response Mechanisms



Government and regulatory authorities

**Compliance and risk management:** Strictly adhere to laws and regulations in the place where we operate, including those related to environmental protection, occupational health and safety, taxation and commercial law.

**Response to policy:** Actively respond to key national policies, such as the "dual carbon" goals, and support local green economic development.

**Public affairs engagement:** Participate in public welfare and charitable initiatives to create shared value.

- Regular meetings and policy exchanges
- Cooperate with regulatory authorities in regular and ad hoc inspections
- Voluntary environmental impact assessments and information disclosure
- Key visit receptions and project briefings



Customers

**Product quality and innovation:** Offer high-quality, high-performance, and safe glass products that meet energy-saving and emission reduction needs.

**Customer service and value:** Excellent pre-sales, in-sales, and after-sales service experiences that protect customer rights and interests.

**Information security:** Ensure the highest level of protection for customer data and trade secrets.

- Daily sales and technical service communications
- Systematic customer satisfaction surveys and analysis
- Regular customer visits and mutual visits among senior levels
- Annual customer appreciation event and new product/technology conference



Investors and shareholders

**Governance and transparency:** High standards of corporate governance and transparent ESG disclosures.

**Financial performance and value creation:** Solid financial performance and long-term returns for shareholder.

**Risk management:** Effectively manage operational, compliance, and climate-related risks (including transition and physical risks).

**Strategy and performance:** Clear growth strategies and sustainable performance outcomes.

- Statutory information disclosures and regular reports (annual report, ESG report)
- Annual general meetings and extraordinary general meetings
- Investor roadshows and one-on-one meetings
- Day-to-day investor relations communications via email and telephone

## Stakeholders' Engagement and Expectation Management

### Stakeholder Groups

### Highly Important Issues and Expectations

### Key Communication and Response Mechanisms



Employees

**Compensation and benefits:** A competitive and fair compensation and benefits system.

**Health and safety:** A safe, healthy and non-discriminatory working environment (aligned with SASB workforce safety metrics).

**Development and training:** Clear career development pathways and ongoing skills training opportunities.

**Diversity and inclusion:** Build a diverse, equitable and inclusive workplace culture.

**Employee care:** Comprehensive welfare protections and care mechanisms (e.g., Caring Fund, Education Fund).

- Competitive compensation and benefits systems
- Trade union organizations and employee representative mechanisms
- Comprehensive on-the-job and promotion training systems
- Internal office systems and real-time communication platforms
- Internal company publications and cultural activities



Suppliers and partners

**Fair procurement:** An open, fair, and impartial procurement process and business environment.

**Integrity and compliance:** Adhere to commercial agreements and jointly maintain a clean supply chain.

**Collaborative and win-win situation:** Pursue a long-term, stable and mutually beneficial partnership.

- Supplier conferences and code of conduct briefings
- Systematic supplier access, evaluation and management systems
- Regular on-site audits and performance reviews



Local Communities

**Environmental protection:** Minimize the impact of operations on the local environment to protect ecosystems.

**Social responsibility:** Proactively fulfill the corporate citizenship, contributing to local economic development and employment.

**Community engagement:** Participate in community development through charitable activities, volunteer services and similar initiatives.

- Project environmental and social impact assessments
- Community interviews and site visits
- Transparent emissions and environmental data management
- Regular community welfare and open day events

### MATERIALITY ASSESSMENT

To ensure that this report accurately discloses the environmental, social and governance (ESG) issues that are most critical to Xinyi Glass and our stakeholders, we have established a systematic materiality assessment process in accordance with the Global Reporting Initiative (GRI) Standards and the relevant guidelines of The Stock Exchange of Hong Kong Limited. This process aims to identify, prioritize, and validate ESG issues that have a material impact on the Company's long-term value creation, and to make it the core of the content of this report and the Company's sustainability management strategy.

#### Materiality Assessment Process

Our assessment process is overseen and executed by the Board and is mainly divided into the following three stages:

**Identify:** Through diverse stakeholder communication channels (including but not limited to questionnaires, meetings and interviews), combined with the analysis of the characteristics of the glass manufacturing industry, international sustainability trends (such as TCFD, SASB recommendations) and Company's development strategies to broadly identify a list of ESG issues that may have a material impact.

**Prioritize:** Analyze the identified issues from two aspects: "the degree of impact on the business finances and operations" and "the materiality to stakeholder's decisions and expectations". This process will reference the assessment results of the previous year, the quantitative and qualitative data from questionnaires, and will specifically consider the climate-related risks and opportunities (in accordance with IFRS S2 and TCFD) and their potential financial impacts on each issue.

**Validate & Approve:** The prioritized matrix of material issues and analysis results are reviewed by the Management Committee and submitted to the Board for final review and approval. The material topics validated by the Board will serve as the basis for in-depth disclosure in this report and Company's management priorities, ensuring that governance, strategy, risk management and indicator objectives are closely aligned with material topics.

2025 Materiality Matrix



Correspondence Between Major Topics and Frameworks

The material topics identified by the Board have been systematically integrated into the corresponding sections of this report and are closely linked to the international disclosure framework:

- **Climate Change (Energy Conservation, Emission Reduction, and Climate Change Response):** As a core issue, we have set up a separate chapter for detailed disclosure in accordance with the four pillars of TCFD and IFRS S2 requirements (see the chapter “**Low-Carbon Transition and Climate Resilience**”).
- **Occupational Health and Safety, Employee Rights and Inclusion:** The management policies and performance indicators of these major social topics are disclosed with reference to the GRI Standards and SASB recommendations for the construction products industry.
- **Green Products and Innovation:** This topic connects our business strategy to climate transition opportunities, demonstrating how we help our customers achieve their environmental goals through our products.

## ESG Performance and External Recognition

Xinyi Glass regards international ESG ratings and indices as important tools to review its own sustainability management performance, drive continuous improvement, and benchmark against global peers. We actively participate in authoritative assessments, aiming to demonstrate our commitment and achievements to investors and all stakeholders with more objective and transparent standards, and systematically integrate assessment feedback into our strategic planning and risk management processes to strengthen the long-term resilience and competitiveness of enterprises.

We actively accept market testing by participating in the following rigorous international ratings and questionnaires:

Rating Agencies/ Schemes	Assessment Scope/Questionnaire	Our Performance/Participation Status
Global Carbon Disclosure Program (CDP)	Climate change questionnaire	Grade C
	Water Safety Questionnaire	Grade C
Dow Jones Sustainability Index (DJSI)	Corporate Sustainability Assessment (CSA)	30 points
Hang Seng Index Company Limited	Corporate Sustainability Index Series	Hang Seng Index ESG rating: Grade BBB
Morgan Stanley Capital International (MSCI)	ESG rating	Grade CCC
Shanghai Huazheng Index	ESG rating system	Grade B
Sustainalytics	ESG risk rating	ESG Risk Index: 30.2 points
SynTao Green Finance	ESG rating	Grade B+

### Major ESG Indices Included

Our sustainability efforts have also been recognized by the following key ESG indices. Inclusion in these indices represents recognition of our ESG performance in specific markets and helps attract funds that value sustainable investment.

### Hang Seng Sustainability Index Series:

- HSI ESG Index
- HSI ESG Enhanced Index
- HSI ESG Enhanced Select Index
- HSI Low Carbon Index
- Hang Seng ESG50 Index
- Hang Seng Climate Change 1.5°C Target Index

### International ESG Index:

- WORLD SMALL CAP ESG BROAD CTB SELECT
- WORLD SMALL CAP ESG ENHANCED FOCUS CTB
- WORLD SMALL CAP ESG SCREENED

We are committed to achieving steady improvement in ESG performance and creating long-term, stable value for our stakeholders.

## Integrity in Governance and Business Ethics

### Goal

To build and maintain a transparent and incorruptible business environment, strengthen the rigor of the anti-corruption management mechanism, and continue maintain a 100% resolution rate for corruption complaints.

Xinyi Glass regards integrity as an insurmountable bottom line for corporate operations. To systematically implement this commitment, the Group has set up an “**Internal Control Center**” under the direct leadership of the Chief Executive Officer, which follows the principle of “prevention first, supplemented by investigations”, and is responsible for promoting and supervising the integrity affairs of the whole Group. Through multiple measures such as system construction, education and training, audit supervision, and whistleblowing investigation, we ensure that the concepts of integrity, honesty, fairness, and compliance are integrated into the daily behavior of every employee.

Our integrity management system is based on national laws and has developed a series of internal control systems, including:

“Xinyi Employee Integrity System”

“Ethical Conduct Standards for Xinyi’s Employees”

“Integrity Management System”

“Top Ten Integrity Regulations Rules for Xinyi Employees”

“Xinyi’s Whistle Blower Protection and Reward System”

“Xinyi Group Real-Name Whistle-Blowing System for Corruption Cases”

“Trial Measures for Refusing to Accept Bribes and Rewards”

“Xinyi Default List Management System”

These systems clarify the code of conduct, protection mechanisms, and rewards and punishments, encourage employees, suppliers, and partners to participate in supervision, and actively report through letters, emails, phone calls, and the “Integrity and Trustworthiness” WeChat platform. All reports are investigated, evidence collected and addressed in strict accordance with the “Integrity Case Handling Procedures”, demonstrating the Group’s “zero tolerance” stance on any form of corruption. In 2025, the Group discovered and handled a total of two corruption cases, both of which were dealt with by relevant personnel in accordance with the established mechanism.


To enhance the deterrent and preventive effects, the Group has implemented the “Xinyi Group Real-Name Whistle-Blowing System for Corruption Cases”. For employees who have been terminated for serious violations of the “Xinyi Group Integrity Management System”, or who have been involved in occupational crimes and have entered into judicial proceedings, the Group will issue real-name notifications through various channels such as internal mail, bulletin boards, the “Integrity and Xinyi” WeChat official account and official website, and will also report to industry associations and partners when necessary to enhance transparency and deterrence.

In terms of risk prevention, the Group continues to improve the “Conflict of Interest Management System” and regularly revises the scope of declaration, approval procedures and time limits. This system comprehensively covers directors, supervisors, senior managers, and other key employees, aiming to identify and manage potential conflicts of interest at the source and maintain a fair and just business environment and workplace.

Through the design and implementation of the above-mentioned interlocking systems, Xinyi Glass is committed to deeply rooting the values of integrity in the organizational fabric, laying a solid foundation for the Company’s sustainable operation and the trust of all stakeholders.

# 1. TRANSPARENT CORPORATE GOVERNANCE

To ensure that ethical standards are deeply rooted in the hearts of the people, we launched comprehensive training and communication in 2025:


Training sessions: <b>29</b> sessions	Training Coverage: <b>3,610</b> participants	Inspection scope: Stationed to inspect <b>11</b> industrial parks
Cultural promotion: <b>31</b> feeds were posted through the "Integrity and Trustworthiness" WeChat public account to continue to create a culture of integrity.		

## Governance and Risk Management

To systematically manage the associated risks, we have introduced the ISO 37001 Anti-Bribery Management System standard in 2024 and formulated the "Anti-Corruption Management Procedures" accordingly. The procedures guided us through periodic risk identification and assessment of the following **seven high-risk business** areas:

- Anti-corruption organization construction
- Sourcing and supply chain
- Sales management
- Financial management
- Engineering construction
- Technology research and development
- Human resources and administrative logistics

The risk self-assessment results in 2025 show that a total of 5 businesses are low risk and 2 businesses are medium risk. The results of this assessment will be used directly to guide the allocation of our audit and control resources for future years.

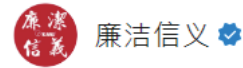
<b>Anti-Corruption Key Performance Indicator (KPIs) in 2025</b>			
Corruption complaint handling rate <b>100%</b>	Corruption case closure rate <b>100%</b>	Number of corruption cases handled <b>2</b> pieces	

## 1. TRANSPARENT CORPORATE GOVERNANCE

We maintain a “zero tolerance” policy toward confirmed acts of corruption and report it both internally and externally in accordance with the “Xinyi Group Real-Name Whistle-Blowing System for Corruption Cases” to achieve the effect of warning and prevention.

### *The reporting method is as follows:*

1. Follow the WeChat public account “Integrity and Trustworthiness” and choose to report online
2. Call 15178586699
3. Email to 12388@xinyiglass.com



### **Build a solid line of defense against integrity · Escort the development of the park - Deyang Industrial Park organizes and carries out the “Special Training on Integrity”**



To further promote the construction of the Group’s integrity culture and strictly implement the Group’s work requirements of “publicity as the main and investigation as the supplement”, on 11 September, the “Integrity Special Training” was organized in the classroom on the 3rd floor of the canteen of Deyang Industrial Park. This training was delivered by an internal control specialist of the Xinyi Department of Internal Control Center, and 251 employees from various departments at the Deyang Industrial Park, including administrative staff, lead operators, technicians, safety officers, and sales and service personnel.

At the training session, the internal control specialist focusing on the core principles of “keeping alert, fighting corruption and promoting integrity, combating corruption and uplifting moral standards, and identifying and addressing hidden hazard ” began by carrying out a systematic interpretation of the Group’s integrity management system, clearly clarifying the red line and bottom line of professional behavior. Subsequently, he combined the typical cases of integrity violations investigated and dealt with by the Group’s internal control center in various industrial parks in recent years, and deeply analyzed the causes, consequences and lessons brought about by the violations in the cases. These real-life, shocking cases—all closely related to the employees’ daily work—helped those in attendance that evening deeply recognize the dual harm that corrupt behavior inflicts on both individual career development and corporate reputation, further strengthening everyone’s resolve to conduct business with integrity. Participants unanimously expressed that they had gained a great deal from this training session.

Integrity is the lifeline of an enterprise and the cornerstone of its stable and long-term development. Only by adhering to integrity can enterprises earn the trust of the market and remain invincible in the fierce market competition. This integrity training not only strengthened the integrity awareness of mutual supervision and self-restraint of all employees of the Company, but also further built the Company’s integrity defense line and promoted all employees to work together to escort the development of the park.

## 2. GREEN PRODUCTS UNDER SUSTAINABLE MANUFACTURING

### Green Production and Environmental Management

Xinyi Glass deeply integrates environmental management into the core of its production operations, managing its environmental footprint in a systematic manner, and viewing it as a key strategy to address climate risks, reduce compliance costs, and achieve long-term operational resilience. Our environmental management system is based on the principle of “who manages and is responsible”, ensuring clear responsibilities and is committed to improving resource efficiency and pollution prevention through technological innovation and continuous improvement.

### Energy Management and Climate Action

To effectively manage energy costs and combat climate change, we focus on energy mix optimization and efficiency improvement.

**Fuel Transition:** All the Group’s float glass production lines use clean energy natural gas as the main fuel to reduce pollutants and greenhouse gas emissions during combustion at the source.

**Energy Efficiency and Recycling:** We systematically implement energy recovery projects, efficiently utilize waste heat from float glass kilns, and install distributed solar power generation systems in all industrial parks. These measures not only reduce the demand for purchased electricity and reduce Scope 2 (indirect energy) emissions but also ensure some of the park’s production and living energy.

**Technological transformation:** Through projects such as the transformation of lighting equipment in the production workshop and the refined management of electricity consumption in production equipment, we continue to improve the energy efficiency of the entire group, directly corresponding to the control of operating costs and the reduction of carbon emissions.

### Emission and Pollution Control

We invest in advanced end-of-line governance technologies and establish real-time monitoring systems to ensure compliance and minimize environmental impact.

**Exhaust gas control:** All float glass production lines are equipped with flue gas online monitoring systems, and data is uploaded in real time to regulatory authorities, and is equipped with desulfurization, denitrification, and efficient dust removal systems to ensure that emissions such as sulfur dioxide (SO<sub>2</sub>), nitrogen oxides (NO<sub>x</sub>), and particulate matter continue to be stable below national standards.

**Water Resources and Wastewater Management:** Implement “rainwater and sewage diversion” and “clean sewage diversion” during project construction and set up sewage treatment facilities to achieve the reuse of treated sewage and reduce water consumption and environmental emissions.

**Noise and Waste Management:** Control noise pollution through reasonable layout and noise reduction measures in the factory. Implement classification and standardized management of solid waste and strictly abide by national standards for the storage of hazardous waste and general industrial solid waste, and seek compliant resource treatment methods.

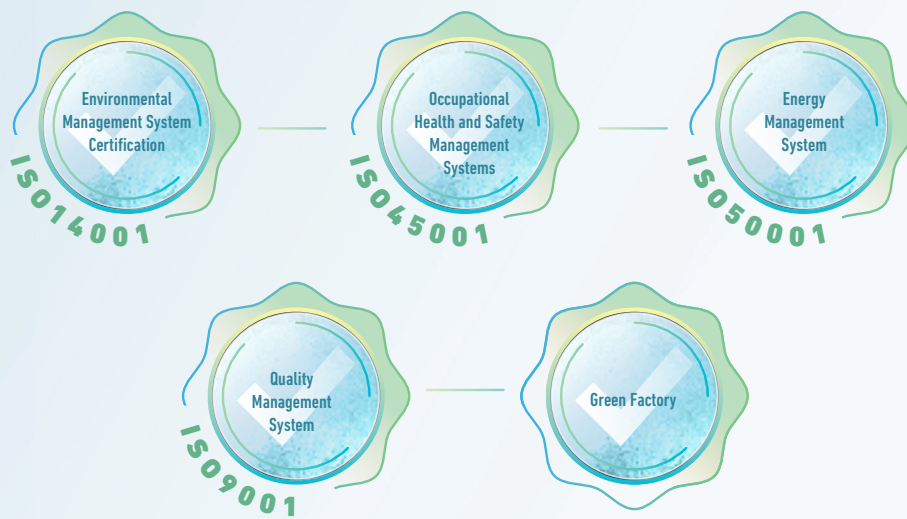
### Environmental Compliance and Ecological Protection

**Project Life Cycle Management:** All new industrial park projects strictly comply with the “Environmental Impact Assessment Law of the People’s Republic of China” and other regulations, conduct comprehensive environmental impact assessments, and implement various environmental protection measures during the design, construction, and operation phases, covering water, air, soil, and groundwater pollution prevention.

**Continuous monitoring:** After the industrial park is put into operation, implement online real-time monitoring in strict accordance with the “Measures for the Management of Automatic Monitoring of Pollution Sources” to ensure that all emission data is compliant and actively accept social supervision.

### Certifications and Performance

The Group continues to promote the standardization and systematization of environmental management work, and the following are the environment-related certifications we have obtained (excerpts):



### Green Finance and Product Innovation

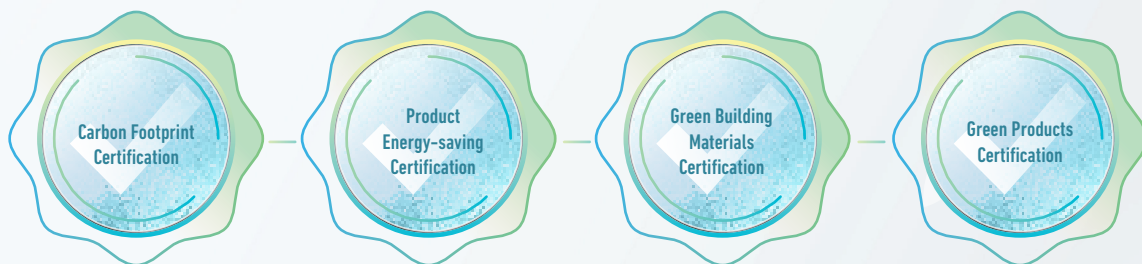
Xinyi Glass actively responds to global sustainable finance initiatives and has established strategic partnerships with various financial institutions to support the development of green financial markets in Hong Kong and Mainland China. Since 2022, the Group has successfully participated in and obtained syndicated loans linked to sustainability performance for many consecutive years. The key performance indicators (KPIs) of these financing arrangements are directly related to the greenhouse gas emission intensity and energy consumption intensity generated by the Group's production activities. We have made binding annual emission reduction commitments in this regard and are proactively subject to scrutiny from financial institutions and the public. This move not only provides key financial support for our green production transformation and technological upgrades, but also clearly conveys to the market the Group's determination to implement low-carbon development with practical actions. All financing-linked sustainability performance targets were met, ensuring the orderly progress of the emission reduction pathway. In the future, the Group will continue to explore and utilize various sustainable financial tools to provide development momentum for projects that meet ESG standards.

### Green Products and Solutions

We firmly believe that the real green transformation begins with products. Therefore, we integrate environmental protection into the entire process of research and development and innovation and are committed to providing green solutions that can directly empower customers to reduce carbon emissions.

In 2020, we successfully launched a new generation of automotive glass products - SOLACO thermal and acoustic glass. This product uses advanced nanomaterial technology to integrate excellent heat insulation, sound insulation, and more than 99% UV blocking functions, which can effectively reduce the energy consumption of air conditioning in the car and improve driving comfort and environmental performance. In addition, the long-selling SOLAR-X heat-reflective automotive glass and the Low-E coated glass, which occupies a core position in the construction field, are our direct carriers for promoting energy conservation and emission reduction in downstream industries. Low-E glass can significantly reduce the energy consumption of heating and cooling buildings through its unique coating, making it a key material for green buildings.

To ensure that the environmental benefits of our products are certified by authoritative bodies, we have actively sought and obtained several key green certifications for our core products, including but not limited to:



These certifications are objective proof of the environmental advantages of our products, helping customers achieve quantifiable carbon reduction targets in the value chain and jointly move towards a low-carbon future.

## 2. GREEN PRODUCTS UNDER SUSTAINABLE MANUFACTURING

### Float glass

On 30 August 2025, the Group launched a new product, Xinyi Ice Blue Glass IB71, which is another major technological breakthrough in the field of energy conservation.

#### Five core advantages

**1. Thermal insulation of the main body, permanent excellent performance:**

Its exceptional thermal insulation performance stems from the glass itself, which remains stable over time without degradation, ensuring a long service life.

**2. High light transmission, high shading, and upgraded cool experience:**

5mm Xinyi Ice Blue® glass maintains a visible light transmittance of over 70% while achieving an infrared transmittance of only 11% (i.e., a blocking rate of up to 89%). This represents a 66% reduction compared to 5mm clear glass, equivalent to an 85% decrease; it significantly reduces the sensation of intense heat exposure and enhances the cooling experience.

**3. UV protection, strong protection:**

5mm Xinyi Ice Blue® glass maintains a visible light transmittance of over 70% while achieving an UV transmittance of only 32% (i.e., a UV blocking rate of 68%), representing a 35% reduction compared to 5mm clear glass—a 52% decrease;

Health protection: Reduces UV damage to human skin and slows the fading and aging of indoor items. Significantly reduces the sensation of sun exposure and enhances the cooling experience.

**4. Ultra-low self-detonation rate, a new benchmark for safety:**

Relying on its unique melting process control technology, Xinyi Ice Blue® glass effectively suppresses the formation of nickel sulfide impurities. Rigorous testing has verified that it achieves an outstanding performance of “one break per 28 tons of glass” after tempering: Converted to standard dimensions (1 square meter), the spontaneous breakage rate is significantly lower than 0.03%, representing a reduction of over 90% compared to the industry-standard spontaneous breakage rate of 0.3% for conventional float glass. This rate is merely one-tenth of the latter, providing a safe and reliable solution to the long-standing industry challenge of high spontaneous breakage risks associated with standard tempered glass.

**5. Processing compatibility, cost reduction and efficiency increase:**

1. Its processing properties are identical to those of standard float white glass, requiring no upgrades or modifications to existing cutting or edge-polishing equipment;
2. It places no special demands on tempering furnaces; high-quality tempering can be easily achieved even without a convection system;
3. Thanks to a unique heat-absorbing formulation, it achieves rapid and uniform heating. After tempering, stress distribution is more even and flatness is improved, while also offering the cost advantage of significantly reduced energy consumption during the tempering process.



### Application Scenarios

#### 1. Automotive thermal insulation solutions

**Crystal-Clear Vision, Cooler Cabin:** Specifically designed for automotive windshields, side windows, and sunroofs, it delivers unparalleled clarity while effectively blocking infrared heat radiation from sunlight.

**Enhanced Comfort:** Significantly reduces interior temperature, greatly improving ride comfort, and creating a cooler, more pleasant driving environment.

#### 2. Open building component “invisible parasol”

**Ideal Applications:** Perfect for open-air architectural envelope structures such as carport skylights, gazebos, walkway canopies, and observation deck railings.

**Key Features:** While ensuring ample natural light, it provides exceptional sunshade and heat-blocking performance—much like unfurling an “invisible parasol” over the space—effectively reducing the intense heat caused by direct sunlight.

#### 3. Energy conservation solutions for closed buildings

**High-Performance Partner:** As an ideal choice for the exterior envelope of enclosed buildings (such as office buildings, shopping malls, and residential structures), it is recommended for use in combination with insulated coated glass.

**Dual Benefits:**

**Superior Sunshade and Thermal Insulation:** The integrated system provides exceptional sunshade and thermal insulation performance, effectively blocking external heat and cold.

**Significant Energy Savings and Reduced Consumption:** It substantially reduces a building’s energy requirements for cooling and heating, thereby significantly lowering operational energy consumption and costs while enhancing the building’s sustainability.

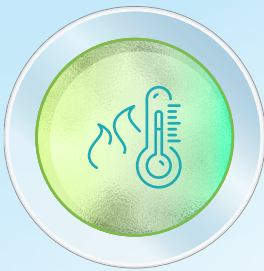
The launch of Xinyi Ice Blue Glass IB71 further demonstrates Xinyi’s leading strength and strategic determination in green, low-carbon, and intelligent manufacturing

## 2. GREEN PRODUCTS UNDER SUSTAINABLE MANUFACTURING

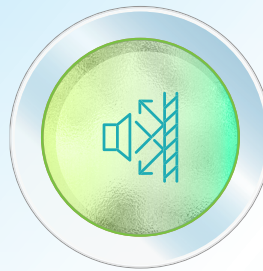
### *Automotive glass*

SOLACO thermal and acoustic insulation automotive glass is a replacement product independently developed by Xinyi Glass, which integrates thermal insulation, sound insulation, UV protection and other functions through nanomaterial doping technology

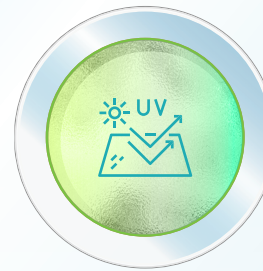
#### Product Features



SOLACO heat- and sound-insulating automotive glass blocks more than 85% of the infrared radiation in sunlight. Tests have shown that even under intense summer sunlight, driver and passengers do not feel the heat, thereby enhancing driving comfort. Compared to standard windshields, SOLACO effectively reduces heat buildup inside the vehicle, thereby lowering the load on the car's air conditioning system, reducing fuel consumption, and making it more energy-efficient and environmentally friendly.



SOLACO heat- and sound-insulating automotive glass achieves a weighted sound reduction index (WRR) of 34 to 35 decibels. Compared to standard automotive glass, it offers superior sound insulation and noise reduction, providing drivers and passengers with a quieter and more comfortable driving experience.

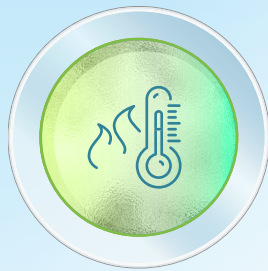


SOLACO heat- and sound-insulating automotive glass blocks over 99% of the UV rays in sunlight, minimizing the harm caused to drivers and passengers while also slowing down the fading and aging of the vehicle's interior and seats. Compared to traditional automotive window films, SOLACO heat- and sound-insulating automotive glass does not suffer from issues such as scratches, bubbling, or aging that commonly occur with window films over time.

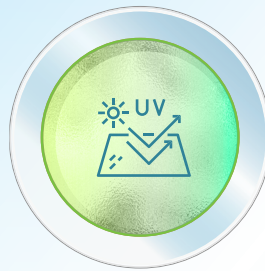
## 2. GREEN PRODUCTS UNDER SUSTAINABLE MANUFACTURING

Another SOLAR-X heat-reflective automotive glass is produced with the most advanced equipment and technology (Patent number: 2006 2 0059916.5). The product is made by coating the surface of high-quality semi-finished transparent float glass with multiple layers of Low-E coating, and then hot bending and sandwich processing.

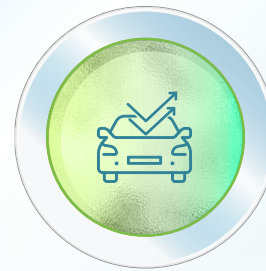
### Product Features



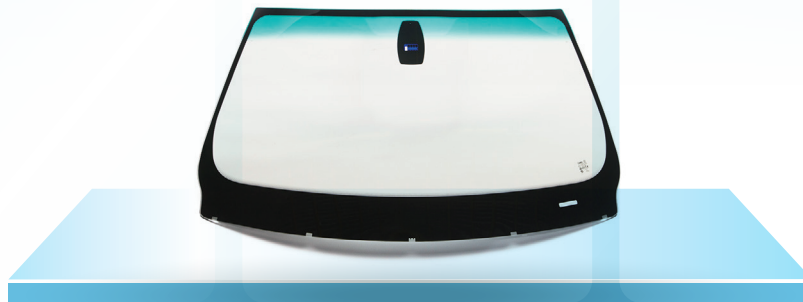
It blocks more than 60% of the heat radiation in sunlight, reduces heat accumulation inside the car, reduces air conditioning load, and reduces fuel consumption.



It can block 99% of UV rays, protect the fiber fabrics inside the car from fading or discoloration, reduce the burning sensation on the skin of the driver and passengers, and improve the comfort of passengers.



With a visible light transmittance rate of more than 70% (more than 75% for products exported to Europe), it ensures that the driver has a wide field of vision, safety and comfort.

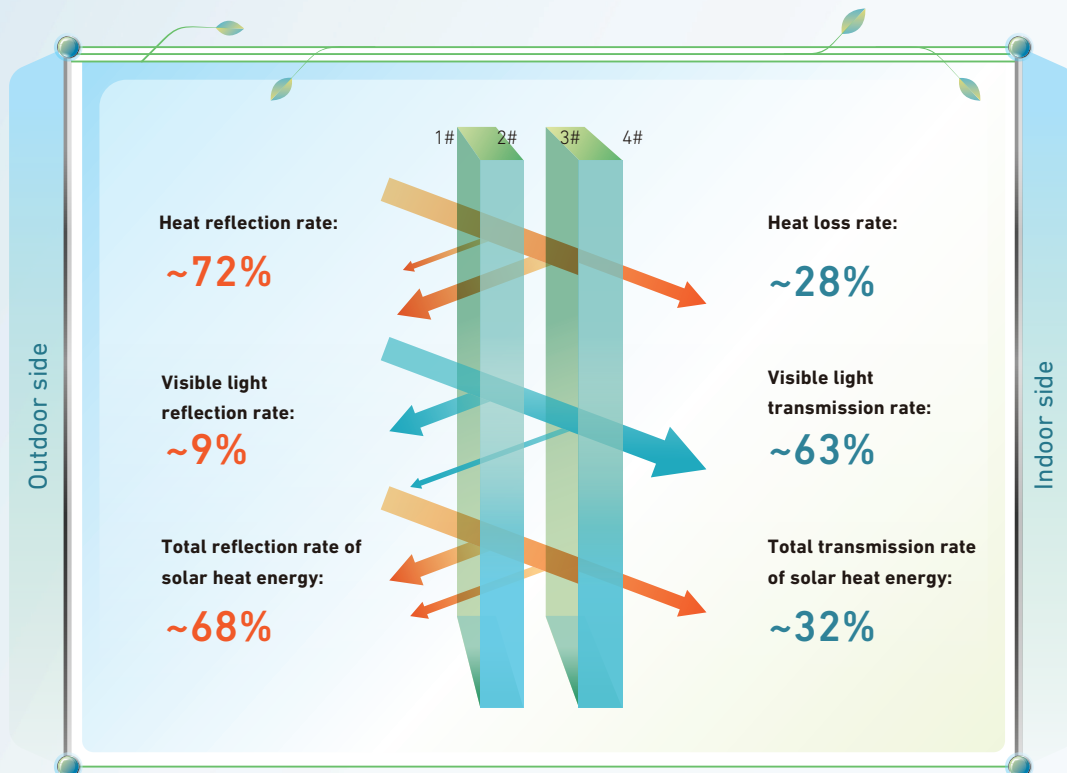


### Architectural Glass

Low-E coated glass, also known as Low-E glass, is the preferred energy-saving building material promoted by the government for green and energy-efficient construction. Its energy-saving properties meet the mandatory energy efficiency requirements set by the state for materials used in public and residential buildings. This glass is produced by coating the surface of standard architectural glass with a layer of metallic silver and auxiliary coatings, then laminating it with another sheet of glass through various processes to create a double-pane unit with a layer of dry air in between. Compared to standard energy-saving glass, Low-E insulated glass products leverage silver's exceptional ability to reflect thermal radiation. While ensuring natural indoor lighting, they block as much of the sun's heat as possible from entering the interior during summer and prevent indoor heat from escaping through the glass during winter, thereby achieving significant energy-saving benefits for buildings.

According to the number of silver layers in the coating structure, Low-E products can be classified into single-silver, double-silver, and triple-silver types. In certain applications, there is a need for a Low-E product that offers high light transmittance while maintaining an extremely low shading coefficient. Consequently, double-silver Low-E glass was developed. Generally, for the same shading coefficient, double-silver Low-E glass provides higher visible light transmittance. This characteristic is even more pronounced in triple-silver products. Double-silver glass can be used in almost any application and has the following features: a lower shading coefficient than shading-type Low-E glass; low emissivity; thermal insulation properties; and generally low reflectivity with good transparency. Compared to ordinary single-pane glass, energy-saving glass (Low-E insulated glass) offers significant thermal insulation, heat retention, and soundproofing effects, achieving energy savings of 67–70%, compared to approximately 40% for ordinary insulated glass.

### How Three-Silver Low-E Glass Works



### To Create Value for Customer Continuously

#### Goal

Maintain the quality of high-quality products and continuously increase the certification rate related to energy conservation and emission reduction

Xinyi Glass regards customer value as the foundation of corporate development, and we are committed to building long-term, stable, and trustworthy cooperative relationships with global customers by providing safe, reliable, and high-performance products as well as excellent service experience.

### Quality Control and Safety Commitment

We have established a rigorous quality and safety management system throughout the entire product life cycle. From research and design, raw material procurement, manufacturing to finished product delivery, every step of the process strictly follows national and international standards such as "National Standard for Flat Glass", "National Standard for Coated Glass", "National Standard for Tempered Glass", etc and obtains complete production qualifications such as "Emission Permit" in accordance with the law. The "Quality Control System" implemented within the Group realizes the whole process monitoring and traceability and has passed multiple product certifications and comprehensive liability insurance from domestic and foreign authoritative institutions, building a dual protection for product quality and customer rights.

With continuous quality improvement and honest management, we have won authoritative recognition such as "China Quality and Integrity Enterprise" issued by the China Entry-Exit Inspection and Quarantine Association, and have repeatedly won honors such as "Excellent Supplier" and "Strategic Partner" awarded by important customers at home and abroad, fully reflecting the market's widespread recognition of Xinyi glass product quality and corporate reputation.

### Global Compliance Certification and Green Product System

To support customers in expanding the global market and responding to the needs of low-carbon transformation, we have systematically promoted products to obtain international mainstream market access certifications and green labels, and have established a comprehensive certification system covering three major product lines:

## 2. GREEN PRODUCTS UNDER SUSTAINABLE MANUFACTURING

Float glass products	Architectural glass products	Automobile glass products
MS 2397:2016	China 3C certification	China 3C certification
ROSH certification	Japan JIS double glazed glass certification	Brazil INMETRO certification
SVHC certification	Japan JIS safety glass product certification	Japan JIS certification
SNI standards of Indonesia	IGCC&IGMA for North America	SNI standards of Indonesia
Indian national standard	SGCC certification for North America	ARAI certification from India
Low-carbon product certification	SNI standards of Indonesia	BIS in India
Float product grade certification	Homogenize furnaces certification	SABS Certification of South Africa
Malaysia national standard	Malaysia SIRIM	US DOT certification
Malaysia coating glass certification	<b>Product energy-saving certification (insulated)</b>	Thai TISI standards
Philippine national standard	Passive house certification	Malaysia SIRIM certification
Vietnam QCVN certification	<b>Carbon footprint certification (insulated)</b>	Vietnam COP certification
<b>Carbon footprint certification (coating glass)</b>	<b>Carbon footprint certification(laminated)</b>	Taiwan VSCC certification
Coating products grade certification	<b>Carbon Footprint Certification (Tempered)</b>	Europe E52 certification
Korean KS standards	Green building materials	Europe ECE certification
	Green products	Australia SA2080 certification
	European standard product certification	Korean KS standards
	Australia AS/NZS2208	
	Australia AS4666 certified	
	Korean KS standards	

\* ***Bold part is certification related to energy saving and emission reduction***

The certification system is not only a passport for products to enter the international market but also a concrete practice of integrating sustainability concepts into product design and manufacturing processes. Through these environmentally friendly certified products, we help customers reduce their operational carbon footprint and jointly promote green and low-carbon transformation.

### Customer Communication and Continuous Improvement

We view customer feedback as a valuable resource that drives the continuous improvement of our products and services. In 2025, we handled a total of 9,208 customer feedback and complaints. In accordance with internal guidelines such as the “Customer Complaint Handling Procedures”, we ensure that every complaint is promptly verified, professionally analyzed, and properly resolved. For confirmed product issues, we not only compensate or replace them, but also initiate root cause analysis, feedback the problem to the production side for process improvement, and systematically prevent recurrence of problems through regular quality analysis meetings and targeted training.

To proactively listen to customer voices, we collect customer feedback twice a year through the “Customer Satisfaction Survey Management Program”, and conduct comprehensive scoring based on objective indicators such as on-time supply rate, complaint rate, and return rate, forming a systematic service improvement cycle.

### Deepen Partnerships

We firmly believe that partnerships that go beyond transactions are key to creating long-term value. To this end, the Group organizes customer appreciation meetings in different regions every year, with the participation of the management in person. These events are not only a platform to express gratitude but also an important occasion to showcase the latest technological achievements, engage in in-depth dialogues, and gather forward-looking needs, helping us more accurately align with customers’ future needs and grow together.

Through these systematic efforts, we continue to fulfill our value commitments to our customers and integrate quality, safety, and green innovation into the product lifecycle to help them achieve their business and sustainability goals.

### Quality Risk Management and Product Traceability

To achieve the goal of “zero defect” delivery, Xinyi Glass has established a systematic product quality risk management and traceability mechanism to ensure the reliability and safety of products throughout the production and delivery cycle.

### Quality Performance and Proactive Management

In 2025, the number of products that need to be recalled due to quality issues will account for about 0.06% of total annual sales, a slight decrease from 2024. The main reasons for recycling are physical defects such as breakage, scratches, and bursts that may occur during transportation or handling. In order to minimize such risks, we strictly implement the “Quality Control Procedures” before all products leave the factory, and the quality control department conducts final inspection and confirmation according to customer standards before packaging and shipping.

### Preventive Quality Assurance System

Our quality management extends beyond final inspection. Through internal systems such as the “Product Audit Management Procedures” and the “Quality Record Management Procedures”, the Group implements routine production process audits and systematic evaluations. This mechanism effectively identifies potential deviations, systemic risks, and long-term quality trends in the process, allowing us to take preventive corrective measures before problems occur and prevent defective products from occurring at the source.

### Full Process Traceability

To strengthen our ability to analyze problems and continuously improve, we have implemented the “Product Identification and Traceability Management Procedures”. The system ensures that each batch of products is clearly identified, with traceability of raw material sources, production batches, process parameters, and factory inspection records. This complete traceability chain allows us to quickly identify problem areas, when necessary, accurately analyze root causes, and implement effective process improvements and preventive measures, thereby enhancing the transparency and quality resilience of the entire supply chain.

Through the above progressive management practices, we are not only committed to controlling the recycling rate but also focusing on building a modern quality management system that focuses on prevention, data-driven, and has complete traceability, providing customers with stable and reliable high-quality product guarantees.

### Customer Privacy and Data Protection

#### Goal

To promote the importance of intellectual property rights and encourage employees to apply for patents within the company

Xinyi Glass understands that customer trust is the cornerstone of our business, so we prioritize data security and privacy protection for our customers and partners. We have established a strict management system to ensure that all customer information, trade secrets and intellectual property rights are properly protected throughout the receiving, storage, use and transmission process.

**Data Protection and Confidential Information Management**

Our data protection practices strictly comply with the “Archives Law of the People’s Republic of China” and other relevant laws and regulations, and are detailed through a series of internal policies, including the “Customer Property Management Procedures”, “Documents Management Procedures”, “New Customer Account Opening Procedures”, and “Procedure for Protecting Customer Confidential Information and Ownership”. All data is managed through a tiered classification system and stored in encrypted form; access is restricted to authorized personnel on a “need-to-know” basis. Core confidential documents such as customer design drawings and product blueprints are strictly prohibited from being copied, borrowed, or transmitted to the outside world without the customer’s explicit written consent. We have established strict verification, custody, and maintenance processes for the property provided by our customers and suppliers to ensure that it is always secure, controlled, and confidential.



No customer privacy leaked in 2025

**Employee Awareness and Culture Building**

To deeply embed data security awareness in our organizational culture, we have officially implemented the “Information Security Rewards and Punishments Management Regulations” in 2024. The regulations clarify the requirements of various systems, processes, and operating procedures in the information security management system, and link compliance performance with incentive assessment mechanisms to systematically strengthen the sense of responsibility and vigilance of all employees for information security.

**Respect and Protection of Intellectual Property Rights**

We firmly uphold our own intellectual property rights and those of our partners. The Group has registered and continues to maintain a series of trademarks and patents, building a solid brand and technology moat. We have adopted a “zero tolerance” attitude towards any suspected infringement, established convenient reporting channels (phone and email), and actively took legal action to pursue it to the end. In 2025, we officially reported two cases of intellectual property infringement, one of which has been concluded by the judiciary. This move not only protects our legitimate rights and interests and market competitiveness but also sends a clear signal to the market that we respect innovation and the rule of law.



*The above are some of the registered trademarks of the Group*

### Product Authenticity Inspection Service

To protect the rights and interests of consumers, we provide convenient channels for official authenticity checks. Customers can search for the "Xinyi Glass Authenticity Inquiry" mini program through WeChat, or send an email to 12388@xinyiglass.com, or call +86 15178586699 for consultation and verification.



### Innovation-driven and Intellectual Property Management

Xinyi Glass regards innovation as the core engine of corporate development and elevates the creation, protection and management of intellectual property rights to a strategic level. We not only actively defend intellectual property rights externally but also build a systematic incentive and management system internally to drive continuous technological innovation and knowledge accumulation.

### Internal Innovation Incentive Mechanism

To stimulate the innovation potential of all employees, we deeply bind patent achievements to employees' career development and clearly include them in the professional title evaluation system. At the same time, the Group has set up a patent reward system to pay a one-time bonus to each employee who successfully obtains a patent. This mechanism of "paying equal attention to honor and incentives" effectively creates an organizational atmosphere where all employees' value innovation and respect knowledge, and internalizes intellectual property awareness as part of corporate culture.

### Patent Achievements and Digital Management

As of 31 December 2025, the Group has successfully applied for a total of 2,130 patents, achieving a strong annual growth of 11.4%, demonstrating our strong innovation vitality and technological reserves. The patent structure covers inventions, utility models, designs, and software copyrights, forming a technology protection network that is both forward-looking and practical.

	The number of patents applied	The number of patents successfully applied
<b>Total</b>	<b>2,757</b>	<b>2,130</b>
Invention	694	245
Utility model	2,020	1,844
New appearances	11	9
Software Works	32	32

To achieve efficient and refined management of intellectual property assets, the Group has introduced the "Patent Data Management" system and the "OA Patent Management" process. This system realizes electronic tracking of the entire patent life cycle, with dedicated personnel responsible for maintaining it, ensuring the accuracy, concentration, and security of patent information, greatly improving the operational efficiency and strategic value of patent assets.

Through a three-pronged strategy of "encouraging innovation, ensuring strict protection, and implementing systematic management," Xinyi Glass is continuously transforming its innovative achievements into core competitive strengths that drive the upgrading of green products and the high-quality development of its business.

### 3. LOW-CARBON TRANSITION AND CLIMATE RESILIENCE

As a leading global integrated glass manufacturer, we implement our mission of “Leading a Green New Life” in our corporate actions, not only empowering customers through high-quality energy-saving products, but also considering energy conservation and consumption reduction, carbon neutrality and energy cost optimization as the core of our strategy related to the long-term survival and competitiveness of our enterprises. We continue to promote innovation in raw material selection, production processes, and deep processing technologies, integrating and optimizing the green industry chain to create product experiences that combine performance and environmental protection value for customers. The Group continues to increase investment in technological upgrades, energy efficiency improvements, and environmental protection facilities, and is committed to building Xinyi Glass into a world-class brand driven by environmental protection and innovation.

#### Climate risk identification and management

##### I. Governance structure and supervision mechanism

The board assumes ultimate oversight of climate-related risks, ensuring that climate issues are integrated into the company’s long-term strategy.

###### 1. Oversight at the Board Level:

Management (authorized by the Board) is responsible for direct oversight of the development, implementation, and disclosure of climate strategies and targets. The management regularly reviews the results of climate risk assessments, progress on emission reduction targets, and analysis reports on emerging opportunities, and reports to the Board at least semi-annually. The Board is responsible for approving major climate strategies, risk tolerance, and capital allocation plans related to the Company’s long-term resilience.

###### 2. Management Perform Duties:

Led by senior management, a carbon management leadership group has been established, comprising finance, operations, research and development, strategy and investor relations. This working group coordinates data collection, executes quantitative analysis, and integrates climate-related financial impacts into business planning, risk management, and capital budgeting processes to ensure effective strategy implementation.



**2. Risk and Opportunity Identification and Assessment Process**

We employ a systematic, dual-perspective process to conduct comprehensive identification and assessment at least once a year.

Perspective	Core approach	Key input sources
External environment scanning	Continuously monitor policy, technology, market, and natural environment trends.	<p><b>1. Policies and regulations:</b> Track carbon pricing and energy efficiency standards (such as EU CBAM) in China and where it operates.</p> <p><b>2. Technological Frontiers:</b> Focus on breakthrough technologies in new energy.</p> <p><b>3. Physical Risks:</b> Employ authoritative climate scenarios (e.g., NGFS) to assess long-term physical risks such as flooding and high temperatures at production sites.</p>
Internal value chain analysis	Comprehensively review the value chain from procurement, production to products.	<p><b>1. High Energy Consumption Link:</b> Focus on the energy consumption and emissions of the float glass melting process.</p> <p><b>2. Key Assets:</b> Identify factories and facilities located in climate-sensitive areas.</p> <p><b>3. Product Portfolio:</b> Evaluate the adaptability and growth potential of each product line to the low-carbon market.</p>

Through the above process, the Group identifies **transition risks** (such as policy and carbon costs), **physical risks** (such as extreme weather), and strategic opportunities in terms of **resource efficiency, products and services** that are financially significant to Xinyi Glass.

#### 3. Quantitative Analysis and Financial Impact Integration

To translate climate issues into the language of management, we have developed a financial quantitative model that translates risks and opportunities into potential financial impacts to support decision-making. The identified risks and opportunities are inferred from the following situations and related impacts through quantitative and financial impact modelling:

2025 Xinyi Glass Climate-related Risks and Opportunities Financial Impact Estimate Table

Category	Risk/ opportunity type	Project	Financial impact direction	Time frame	Quantitative Estimate of Financial Impact (Annual/One-time)
Climate risk	Transformation risk	Policy and regulatory risk (carbon cost)	Negative	Long-term	Tens of millions to hundreds of millions of RMB
	Transformation risk	Market and technology risk (product iteration)	Negative	Medium term	Research and development investment increased by 5%-15%
	Transformation risk	Reputational risk (financing costs)	Negative	Medium term	Weighted average cost of capital increased by 0.1%-0.5%
	Physical risk	Acute risk (extreme weather)	Negative	Short-term	Losses from a single incident range from tens of millions to hundreds of millions of RMB
	Physical risk	Chronic risk (increased temperature)	Negative	Long-term	Operating expenses increased by 1%-3%
Climate opportunities	Resource efficiency	Improve energy efficiency	Positive	Medium term	Reduce operating costs by 1%-5% (Annual savings ranging from tens of millions to over 100 million yuan)
	Products and services	Energy-saving glass products	Positive	Medium term	Revenue increased significantly, and profit margins increased by 3-7 percentage points
	Products and services	New energy vehicle glass	Positive	Medium term	Expansion into new markets (generating hundreds of millions of yuan in new orders)
	Circular economy	Waste glass recycling	Positive	Short-term	Reduce raw material costs (annual savings of tens of millions of dollars)

### 3. LOW-CARBON TRANSITION AND CLIMATE RESILIENCE

Through strict governance led by the Board, systematic identification processes, and cutting-edge financial quantitative methods, Xinyi Glass deeply integrates climate-related factors into the core of corporate governance and strategy. We are committed to demonstrating to our stakeholders our ability and determination to manage long-term risks, seize green opportunities, and ultimately achieve sustainable value creation through transparent and responsible disclosure.

#### 4. Strategic Integration, Goal Setting, and Continuous Review

1. **Strategy and Capital Allocation:** The quantitative analysis mentioned above is a key input for strategic decision-making. For high-priority risks, we plan corresponding mitigation capital expenditures (such as energy-saving technological transformation); For high-potential opportunities, we have allocated growth investments (such as capacity expansion of energy-efficient glass).
2. **Goal and performance management:** Carbon emission intensity across all systems will decrease by 3% by 2030, and by 5% by 2035 compared to current levels. Energy intensity across all systems will remain unchanged by 2030, and decrease by 3% by 2035 compared to current levels.
3. **Continuous Review and Iteration:** The Board and the Sustainability Committee conduct annual reviews of the effectiveness of climate scenario assumptions, quantitative models, and management strategies to ensure alignment with the latest science, market dynamics, and corporate strategies, and continuously optimize management processes.

#### Climate Resilience

Based on the latest international climate change agreements (“Paris Agreement” temperature control targets and IPCC AR6 assessment conclusions), the following uses scenario analysis to evaluate Xinyi Glass’s climate resilience under different climate scenarios, including orderly transition, disorderly transition, and high emissions.

Xinyi Glass Climate Resilience Assessment

Resilience dimension	Scenario 1: Orderly Transformation (1.5°C - 2°C)	Scenario 2: Disorderly Transformation (2°C - 3°C)	Scenario 3: High emissions (>3°C)
Policy compliance resilience	High	Medium	Low
	Carbon prices have risen steadily, and companies can respond in an orderly manner by improving energy efficiency and fuel substitution. The return on investment in low-carbon technology is predictable.	Carbon prices have risen by leaps and bounds, and compliance costs have skyrocketed. If the initial investment in emission reduction is insufficient, it will face a greater cost impact.	Trade barriers such as carbon border taxes have been fully implemented, and export costs have risen sharply. Policy fragmentation has led to a surge in compliance complexity for cross-border operations.

### 3. LOW-CARBON TRANSITION AND CLIMATE RESILIENCE

#### Xinyi Glass Climate Resilience Assessment

Physical asset resilience	Middle and high	Medium	Low
	Extreme weather events are increasing but manageable. Coastal production bases (such as Guangdong and Malaysia) need to strengthen flood and typhoon prevention capabilities. The potential loss of a single event is about tens of millions to hundreds of millions of yuan.	The frequency of extreme weather has increased significantly, and the exposure of some production bases has increased. Insurance costs are rising, and some high-risk areas may face a decline in insurability.	Rising sea levels and stronger storm surges threaten coastal bases. The IPCC points out that if the temperature rises by more than 2°C, some coastal ecosystems will reach their adaptation limits. Some assets may need to be strategically withdrawn.
Market and product resilience	High	Medium	Low
	Driven by green building policies, energy-saving products such as Low-E glass are in high demand. The Company's product structure is highly consistent with the low-carbon trend.	Demand for energy-efficient products remains, but economic fluctuations may affect overall demand in the construction industry. It is more difficult for carbon costs to be transmitted downstream.	Economic growth slowed down by climate shocks; reduced construction activity; However, the demand for reconstruction after extreme weather may rise in stages, showing volatility.
Supply chain resilience	Middle and high	Medium	Medium low
	The main raw materials (soda ash, quartz sand) are in stable supply. Risks can be reduced through supplier diversification and circular economy (recycling of broken glass).	Extreme weather disrupts the transportation of raw materials (such as water transportation dependent on soda ash). Sharp fluctuations in energy prices affect production costs.	Extreme events have occurred in multiple regions at the same time, increasing the risk of global supply chain disruptions. Logistics costs have increased significantly.
Water resilience	Medium	Medium low	Low
	Glass production requires a lot of cooling water. The IPCC pointed out that under the 2°C and 4°C scenarios, 3-4 billion people around the world will face physical water shortages. Production bases in water-scarce areas face operational risks.	Regional water tensions have intensified, and rising water prices or water withdrawal restrictions have affected production. More funds need to be invested in water recycling facilities.	Water security risks have become systemic challenges. The IPCC emphasizes the fundamental role of water security in all systems transformation.

### 3. LOW-CARBON TRANSITION AND CLIMATE RESILIENCE

Based on the above analysis, Xinyi Glass can take the following measures to further enhance climate resilience, aligning with the “climate resilience development” pathway advocated by the “Paris Agreement” and the IPCC:

A strategic path to improve climate resilience			
Strategic direction	Specific measures	Corresponding to the resilience dimension	Aligned with the latest international agreements
Mitigation action	<ul style="list-style-type: none"> <li>- Increase the proportion of renewable energy used</li> <li>- Continue to invest in low-carbon technologies such as waste heat recovery</li> </ul>	Policy compliance resilience	Support the global temperature control goals of the “Paris Agreement”
Adaptive capacity building	<ul style="list-style-type: none"> <li>- Conduct climate risk assessment and protective reinforcement of coastal production sites</li> <li>- Develop extreme weather emergency plans and conduct regular drills</li> <li>- Optimize the water recycling system to reduce water resource dependence</li> </ul>	Physical asset resilience  Water resilience	Respond to the Global Adaptation Goal under Article 7 of the “Paris Agreement”
Product innovation	<ul style="list-style-type: none"> <li>- Expanded production capacity for energy-saving products such as Low-E glass</li> <li>- Developing glass for new energy vehicles</li> </ul>	Market and product resilience	Promote the development of low-carbon technologies to support the Sustainable Development Goals
Supply chain optimization	<ul style="list-style-type: none"> <li>- Diversification of key raw material suppliers</li> <li>- Increase the use rate of recycled glass fragments (circular economy)</li> <li>- Establish a supply chain climate risk monitoring mechanism</li> </ul>	Supply chain resilience	Cross-domain integrated solutions that comply with IPCC advocacy
Transparent disclosure	<ul style="list-style-type: none"> <li>- Disclose climate-related information in accordance with IFRS S2 standards</li> <li>- Participate in climate-related financial disclosures</li> <li>- Communicate with investors on climate resilience and strategies</li> </ul>	Governance resilience	Respond to the transparency framework requirements in the “Paris Agreement”

### 3. LOW-CARBON TRANSITION AND CLIMATE RESILIENCE

Xinyi Glass fully recognizes that climate resilience is not only a line of defense against risks but also the ability to seize opportunities and create long-term value. In the collective action to combat climate change globally, the Company is committed to integrating the temperature control and adaptation goals of the “Paris Agreement” into its core strategies and building a sustainable development model that is both competitive and resilient through systematic mitigation and adaptation actions.

As highlighted by the IPCC, comprehensive, effective, and innovative responses can create synergies that reduce constraints between mitigation and adaptation, thereby improving both nature and human well-being. Xinyi Glass will take this as its own responsibility and contribute to the development of global climate resilience while achieving its own development.

#### Setting Up of Carbon Management Leading Team

##### Goal

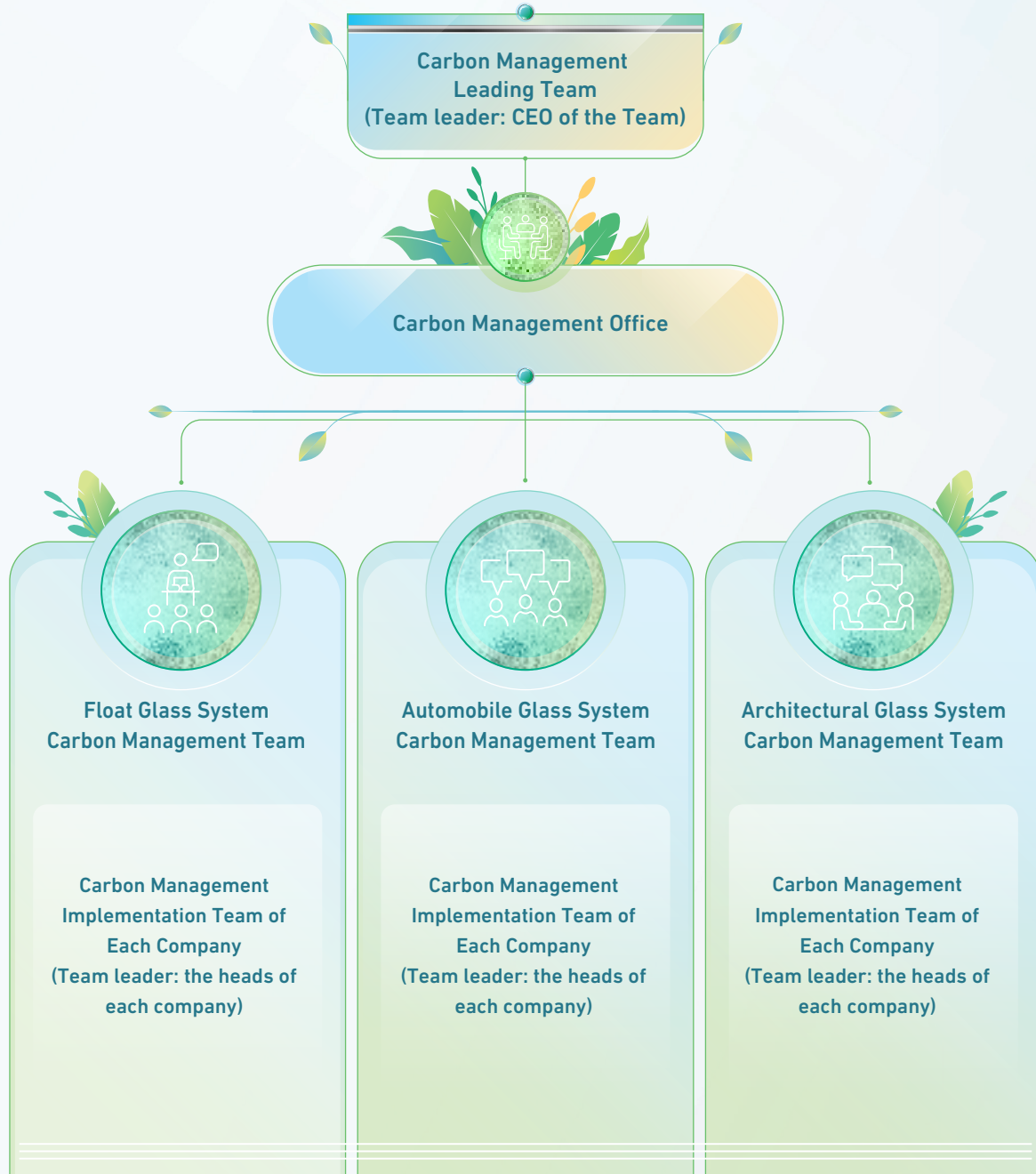
The Group will achieve carbon neutral by 2060, and total emissions remaining at a reasonable level after 2030

In active response to the national policies of “carbon peaking” by 2030 and “carbon neutrality” by 2060, and to realize the Company’s vision of “Leading a Green New Life”, Xinyi Glass formally established the Xinyi Glass carbon management leadership group in 2021, led by the Group CEO, and set up the Xinyi Glass carbon management office. The office is primarily divided into three divisions—carbon policy management, carbon project management, and carbon data management—and is fully responsible for all operations of the Group’s carbon emissions management office.

The carbon management implementation team of each company (headed by the person in charge of each mainland company) implements the work plan for greenhouse gases, carbon emissions, energy conservation and emission reduction for the Group and the system, formulates company goals, and collects relevant laws, regulations and policies related to carbon management in the company’s location. At the same time, the Company’s annual energy conservation and emission reduction plan and energy-saving project implementation plan are compiled, carbon emission factors and total amounts are identified, the economic operation level of equipment in each department is regularly evaluated, and improvement measures for energy conservation and consumption reduction are proposed, and carbon management work plans are implemented to ensure that the goals are achieved.

After receiving data from the various carbon management implementation teams, the Carbon Management Office is responsible for compiling and reviewing the Group’s annual carbon management targets, project implementation plans, and performance evaluation schemes. It also inspects, supervises, and guides the implementation of carbon management plans; oversees the achievement of the Group’s carbon emissions management targets; conducts audits of carbon emissions projects and evaluates performance targets across Group companies; and provides relevant training courses for employees to ensure “top-down and bottom-up alignment”, ensuring that every position is aware of environmental protection and emission reduction, thereby positioning the Group at the forefront of the glass industry in terms of environmental performance.

Xinyi Glass Carbon Management Leading Team Structure Chart



### 3. LOW-CARBON TRANSITION AND CLIMATE RESILIENCE

The Group has formulated a series of strict internal procedures such as Air Pollution Control Procedures (《大氣污染控制程式》), Environmental Monitoring and Measurement Management Procedures (《環境監測和測量管理程式》) and Environmental Objectives, Indicators and Program Management Procedures (《環境目標、指標和方案管理程式》) according to national regulations to better guide employees to implement relevant standards.

In order to improve each emission reduction target more effectively and to make employees pay more attention to environmental issues, the management of each department will set environmental targets at the beginning of each year with reference to environmental objectives, quantifiability, regulatory requirements and feasibility, and implement them to the relevant functional departments. The management plan includes the responsibilities and division of labour of each department and hierarchy, as well as the methods and timetables for achieving the goals, and shall be approved by the carbon management office. Each department promotes the environmental objectives to employees at all levels through publicity, document issuance and internal meetings.

Apart from that, in terms of relevant emission data, the Group engages qualified environment monitoring centers or monitoring company with national approval to conduct annual inspection on sewage, noise and exhaust gas, and maintain such inspection report. All departments regularly inspect the operation of energy consuming equipment and facilities related to their own department according to the relevant guidelines. Each responsible department collects statistics on the monthly consumption of resources and energy (such as water, electricity, fuel, wood, paper, etc.), while the financial department analyzes the progress of the environmental targets and indicators every month. Quality control department reviews the Company's compliance with the environmental laws and regulations and other requirements every year before evaluating environmental management. In terms of the operation of its environment management system, the Company conducts internal review on the environment management system at least once a year, while also conducts environment management review once a year.

Natural gas, a safe, environmental-friendly and clean energy, is adopted as the fuel for the float glass production line, to which the integrated technology of semi-dry desulphurization (NID technology), selective catalytic reduction (SCR) denitrification and dust particle removal by electrostatic is fully applied, and clean production is fully promoted. We managed to achieve clean production and reduced energy consumption and emissions while ensuring that the production system is operating in a safe and stable way. Meanwhile, in accordance with the Measures for the Administration of Automatic Monitoring of Pollution Sources promulgated by the State, an online system for real time environmental monitoring is established to ensure that the emissions meet the national emission standards. With the implementation of various industrial pollution remedial measures, all of Xinyi Glass's pollutant indicators are currently lower than the exhaust gas emission standards required by the State.

#### Continuous measures on reducing emission

##### **Desulphurization: Semi-dry Desulphurization Technology (NID Technology)**

Flue gas from the residual heat furnace draft fan reacts with the absorbent within the circulating ash used for humidification after mixing. The  $\text{SO}_2$  in the flue gas reacts with the absorbent to form calcium sulfite and calcium sulfate. After reaction, the flue gas carries a large amount of dry solid particles into the post-desulfurization bag filter for collection and purification. After being collected by the post-desulfurization bag filter, the ash is separated from flue gas by the filter and transported to a mixer via conveyance equipment. At the same time, slaked lime is added to the mixer, and the content is released back to circulation after humidification and mixing. Purified flue gas is directly released to the chimney through a draft fan. The control system ensures that the reaction temperature within the reactor is constant for released flue gas by adjusting the mixer. The circulating desulfurization ash within the filter is collected from ash bucket. When the amount of ash exceeds the maximum capacity of the ash bucket, it will be released through overflow.

##### **Denitrification: Selective Catalytic Reduction (SCR)**

The process of removing nitrogen oxides in flue gas generated from combustion. A SCR denitrification system is composed of four parts. Flue gas at exiting temperature enters the residual heat furnace. After cooling down, the gas enters a high-temperature electrostatic precipitator. Through mixing and reaction, flue gas is then transferred into a SCR reactor for reaction and filtering. The denitrified pure flue gas is then released back into residual heat furnace for heat collection.

##### **Particulates reduction: Dust Particle Removal (by Electrostatic)**

(by Electrostatic) Dust particles removed by electrostatic by creating an uneven electric field between an electric corona electrode and a precipitation electrode, where the discharge electrode (electric corona electrode) is the anode while the precipitation electrode is the cathode. By generating positive and negative ions through the electric field, dust will build up on the collection plate.

#### Greenhouse Gases

During the production of float glass, automobile glass and architectural glass, greenhouse gases such as carbon dioxide and methane are directly or indirectly emitted. Xinyi Glass emits greenhouse gases in compliance with the Law of the People's Republic of China on the Prevention and Control of Atmospheric Pollution, Measures for the Administration of Automatic Monitoring of Pollution Sources and Accounting Methods and Reporting Guide on Greenhouse Gas Emissions of Enterprises Producing Flat Glass in China (Trial) as promulgated by the state, as well as Environmental Quality (Clean Air) Regulations 2014 in Malaysia and emission standards as required for emission permits in various places. Greenhouse gas emissions are based on the direct and indirect greenhouse gas emissions from the Company's main production operations.

#### *Greenhouse Gas Reduction Initiatives for 2025:*

- 1) We independently developed the "one kiln, two lines" technology and optimized the structural design of large-capacity kilns, implementing these innovations at the float glass plant in Indonesia. This initiative not only diversified our product portfolio but also achieved energy savings and carbon reduction goals, with an estimated annual reduction of approximately 47,000 metric tons of carbon emissions compared to conventional production lines.
- 2) The promotion and application of a new, highly efficient and energy-saving nitrogen generation process will continue in the industrial parks in Deyang and Hainan, significantly reducing electricity consumption and achieving notable energy-saving and carbon-reduction results. It is estimated that this will save over 4.83 million kWh annually, equivalent to approximately 2,556 metric tons of carbon emissions.
- 3) The float glass system has fully leveraged the advantages of the Smart Central Control Center. Through a full-chain, meticulous management approach involving "data monitoring + on-site supervision + targeted rectification + closed-loop tracking," it has continuously reduced energy consumption and carbon emissions per unit of product.
- 4) The Building Glass System has optimized process management for laminated high-pressure autoclaves, implementing automatic alarms and interlocks to reduce equipment idle time and minimize energy waste. This is expected to save over 210,000 kWh annually, corresponding to approximately 114 metric tons of carbon emissions.

#### Hazardous Waste and Non-hazardous Waste

Hazardous and non-hazardous wastes are inevitably produced during the production process. All wastes of the Group are treated in accordance with the Law of the People's Republic of China on the Prevention and Control of Environmental Pollution by Solid Wastes, the Administrative Measures for the Licensing of Hazardous Wastes, the Standard for Pollution Control on the Storage and Disposal Site for General Industrial Solid Wastes and relevant local regulations. The Group advocates "Reduce, Reuse, Recycle and Replace" for all materials, and has internally formulated the Chemical Management Procedures, the Guidelines for Waste Separation Operation and the Waste Management Procedures as the standards for employees to handle hazardous and non-hazardous wastes daily.

**Engage qualified third-party organizations to deal with hazardous waste**

For various types of hazardous waste generated during the production process—including waste mineral oil, various catalysts, empty drums, and plastic barrels—the Group engages qualified third-party organizations at each industrial site to handle them, thereby reducing the pollution caused by such waste to the surrounding environment. This year, a total of 1,904.7 metric tons of hazardous waste was processed by qualified third-party organizations. Additionally, for certain hazardous waste items such as fluorescent lamps, the Group has replaced them with LED lights in recent years and is gradually phasing out such products.

Some hazardous waste that is mainly processed by the engaged qualified third-party organizations:

Types of Waste	Percentage of hazardous waste
Waste mineral oil	37.7%
Waste empty buckets	17.8%
Catalysts of all kinds	12.0%
Waste plastic buckets	5.1%
Waste paint buckets	3.7%



**Hazardous Waste**



### 3. LOW-CARBON TRANSITION AND CLIMATE RESILIENCE

#### *Increase the recycling and reuse of non-hazardous waste*

The Group will continue to improve first-pass yield rates and reduce opportunities for scrap generation. When waste glass is generated, suitable waste glass will be recovered and reused as raw material to control costs and reduce actual waste output. At the same time, the Group strictly controls authorization to produce steel products and the approval of scrap requests to minimize steel waste. All steel waste will be sold to qualified recycling dealers for further recycling and reuse.

Proportion of non-hazardous waste materials that can be recycled and reused:

Types of Waste	Percentage of non-hazardous waste
Broken glass	68.3%
Metal	1.6%
Wood	1.1%
Plastic	0.4%
Paper	0.2%
Percentage of recyclable materials in non-hazardous waste	71.6%



#### Non-hazardous Waste



Behind these considerable numbers, it reflects that Xinyi people bring customers energy-saving and environmentally friendly product experience through continuous integration and optimization of the “green” industry chain, while actively promoting green development, actively promoting “low-carbon production” and “energy conservation and consumption reduction” within the company, encouraging all employees to participate in the practice of “green production concept”, and embarking on the road of green and environmental development.

#### Energy-saving and Emission Reduction by Strengthening Resource Management

Goal

To increase the proportion of renewable energy used and strive to achieve a renewable energy share of 6.0% of total energy by 2030

In addition to strict compliance with the Law of the People’s Republic of China on Prevention and Control of Water Pollution, the Law of the People’s Republic of China on Energy Conservation and other relevant regulations in various regions such as the Measures for the Implementation of the Management of Water Conservation in Cities in Liaoning Province and the Regulations on the Management of Water Resources in Guangdong Province, Xinyi Glass has also formulated guidelines such as the Management Procedures for Energy Conservation and Consumption Reduction within the Group. At the same time, by continuously upgrading and renovating technologies and equipment, saving energy and reducing consumption and investing in environmental protection facilities, the Group is maximizing the effective use of resources and minimizing the consumption of various resources in appropriate manners.

#### *Energy savings*

Types of Energy	Percentage
Natural gas	90.0%
Fuel oil	0.1%
Renewable energy - Solar Power Generation	2.2%
Renewable energy - Residual Heat Generation	2.9%
purchased electricity	4.8%

#### *Continue to increase the proportion of renewable energy use*

Each newly built industrial park is equipped with solar panels, and in recent years, the Group has also been actively installing solar panels from existing industrial parks. At the same time, the Group will regularly clean the equipment and update high-efficiency modules to increase the increase in photovoltaic power generation. Waste heat power generation is another source of renewable energy, and the proportion of renewable energy has further increased from 4.8% to 5.1% through the heat generated during the production process

#### Four Major Measures to Continuously Save Energy and Reduce Consumption

##### 1. Solar power generation



Since 2013, Xinyi Glass has launched a solar power generation project. Relevant projects are launched in all industrial parks, implementing them across its industrial sites nationwide to convert solar energy into electricity for self-generation and self-consumption. The construction of photovoltaic solar power generation and new types of energy storage power stations, along with technological upgrade and transformation, have increased the photovoltaic power generation and utilization, reduce purchased electricity, and further advance in energy conservation and reduction in emission. For instance, the photovoltaic power generation has gained constant incremental benefits from the continuous construction of photovoltaic power stations on rooftops and ground areas across industrial parks, and upgrade and retrofit of existing rooftop and ground-mounted photovoltaic power stations, and design and establishment of new types of energy storage power stations, so as to realise the “generation, storage and usage” integration of photovoltaic power.

##### 2. Low-temperature waste heat power generation



To reduce energy consumption and production costs, Xinyi Glass has built low temperature residual heat generation stations at its production bases in Dongguan, Tianjin, Jiangmen, Wuhu, Yingkou, Deyang, Malaysia, Beihai, Zhangjiagang, Chengmai, Chongqing, Heshan and Indonesia where float glass production lines have been established. This can help to better exercise scientific and reasonable control over the emission of sulphur dioxide, carbon dioxide, nitrogen oxides, dust and high temperature gas generated by the glass melting furnace. Therefore, atmospheric and environmental pollution is significantly reduced, and the problem of high energy consumption and high pollution of the glass industry can be effectively alleviated. Advanced settings are adopted in the thermodynamic system and the installed programme of Xinyi Glass residual heat generation stations, which enable the power stations to operate flexibly and reliably and enabling seamless integration with the glass production lines seamlessly.

##### 3. Using “Grade 1” energy-efficient equipment



The implementation of advanced technologies aims to replace “Grade 2” and “Grade 3” energy-efficient equipment with more energy-efficient “Grade 1” equipment in a gradual manner. Employees must use the equipment in accordance with the process work instructions and arrange production reasonably to improve equipment utilization rate and reduce facilities idle time. At the same time, the production department should improve the utilisation rate of materials, improve yield rate and reduce rework, repair and scrap rate, to conserve resources and energy, and reduce the waste of materials.

#### 4. Designating personnel for electricity consumption improvement measures



Designated personnel will study and propose measures on reducing the electricity consumption, for example, ways for improvement will be proposed on the electricity consumption on coating, lamination and tempering, etc., and their overall effectiveness will be monitored. Designated personnel will report the electricity consumption on equipment, craftsmanship and product processing daily and weekly, in order to improve the electricity conservation measures continuously.

#### *Water conservation*

All of the Group's industrial parks are equipped with recirculating water systems and wastewater treatment systems, the significant reduction of water consumption was achieved by implementing effective measures across the three systems, including unceasingly enhancing the production rate of purified water, implementing wastewater recycling from various production processes through collection, filtration, purification, and treatment, all with the aim of achieving zero discharge. Additionally, separate water meters were installed for different water-consuming equipment to facilitate monitoring and evaluation.

#### **Five Major Measures to Save Water Continuously**

##### 1. Recirculating cooling water system for water recycling



Xinyi Glass actively promotes several measures in water saving and discharge reduction for water circulation. Recirculating cooling water systems have been built in all industrial parks. Through water circulation pump, cool water is circulated to thermal engineering equipment for cooling where cooling water is heated. The heated water is then circulated to the cooling tower, continuing in a continuous cycle. In 2025, the total water volume recycled through the closed-loop system reached 501,320.0 thousand tons, representing a 6.1% increase in recycled water volume.

##### 2. Usage and treatment of sewage



The Group has also constructed sewage treatment system with a view to treating the sewage that is nonreusable or unsuitable for reuse. Sewage will be recycled and reused after treatment, and the water station can achieve zero sewage discharge. It is estimated that approximately 1,603.9 thousand tonnes of water were treated in 2025.

#### 3. Publicity and education



Within all industrial parks, including production workshops, office buildings and living areas, prominent slogans are displayed in visible areas, such as noticeboards, to raise awareness about water conservation. Pre-work meetings serve as reminders for water conservation efforts in production workshops, and periodic inspections are conducted to prevent water wastage. Internally, our focus lies on the daily water management of our production facilities by establishing a water-saving enterprise system and diligently implementing it in accordance with the established guidelines.

#### 4. Energy and water saving team



Energy and water saving teams have been set up for certain systems to renovate the existing water routes by adding water meters to follow up the water consumption of each machine every day. The teams calculate the standard water consumption according to the volume of each machine's water tank, so as to calculate the discrepancy and solve the identified problems. Among which, some industrial parks rectified their water recycling system, and require that except for water evaporated in normal course and the loss of water during circulation, all water discharged in production have to be recycled and reused, thus reducing the water consumption at the greatest extent.

#### 5. Strengthening equipment inspection



The Group will strengthen the daily maintenance and management of water equipment, repair damaged water supply network and facilities in a timely manner, and regularly repair or replace faucets, pipeline valves, flushing valves and other drainage and water supply devices to prevent the waste of "running, emitting, dripping and leaking" and eliminate the phenomenon of "long running water". At the same time, the requirements for water saving are implemented in all aspects of production equipment, work and life, to improve the efficiency of water resource utilisation, establish a long-term water saving management mechanism, achieve sustainable utilisation of water resources, and strive to reduce the water consumption per capita of the enterprise as compared with previous years.

#### ***Reduce packaging materials***

The Group considers using materials that can be recycled, giving priority to environmental-friendly materials, using less materials, and minimizing the impact of packaging materials on the environment during production and processing and after the packaging materials are disposed of. Some industrial parks have implemented film-free bare packaging to save packaging and labor costs since 2021. In addition, the main packing materials of float glass, automobile glass and architectural glass are wooden cases and metal frames, especially encouraging the use of reusable metal frames, and suitable wooden cases will also be reused.

In the past, considering the difficulty of recycling metal and wooden frame packaging due to their bigger size, glass products were mainly packaged in wooden cases. Starting in 2024, to reduce packaging materials, we designed a new metal frame packaging with the metal frame accessory instead of the exporting wooden cases, leading to a great drop in the packaging costs.

The new metal frames can be reused to lower the packaging costs, of which steel materials including angle metal, flat pipe and channel steel are being used. The metal frame structure accessories are assembled through snap-in welding, ensuring that individual components are not too heavy, which could otherwise make handling difficult and affect the container's load capacity. Meanwhile, the fastness of each accessory has been improved with the help of the snap-in welding materials, ensuring the stability of the packaged glass.

Compared with wooden accessories, metal accessories are available for recycling and reusing after exportation of glass with a longer lifespan and easier to be well kept than wooden ones.

		2025	2024	2023
<b>Actual air emissions from our business:</b>				
<b>Sulphur dioxide (SO<sub>2</sub>)</b>	Tonnes	1,955	2,033	2,069
<b>Nitrogen oxides (NO<sub>x</sub>)</b>	Tonnes	4,641	4,063	4,015
<b>Particulates</b>	Tonnes	213	138	140
<b>Total</b>	<b>Tonnes</b>	<b>6,809</b>	<b>6,234</b>	<b>6,224</b>

### 3. LOW-CARBON TRANSITION AND CLIMATE RESILIENCE

			2025	2024	2023
<b>Actual greenhouse gas emissions<sup>1</sup> of our businesses:</b>					
<b>Float glass</b>	Direct emission	tonnes carbon dioxide equivalent	5,768,049	5,226,758	5,091,951
	Indirect emission	tonnes carbon dioxide equivalent	113,181	151,356	157,483
	Total	tonnes carbon dioxide equivalent	5,881,231	5,378,115	5,249,434
	<b>Emission intensity</b>	<b>rounded to four decimal places</b>	<b>0.6089</b> tonnes carbon dioxide equivalent/tonne	<b>0.6269</b> tonnes carbon dioxide equivalent/tonne	<b>0.6305</b> tonnes carbon dioxide equivalent/tonne
<b>Automobile glass</b>	Direct emission	tonnes carbon dioxide equivalent	314	258	269
	Indirect emission	tonnes carbon dioxide equivalent	193,013	225,411	213,199
	Total	tonnes carbon dioxide equivalent	193,327	225,669	213,468
	<b>Emission intensity</b>	<b>rounded to four decimal places</b>	<b>0.0027</b> tonnes carbon dioxide equivalent/m <sup>2</sup>	<b>0.0032</b> tonnes carbon dioxide equivalent/m <sup>2</sup>	<b>0.0034</b> tonnes carbon dioxide equivalent/m <sup>2</sup>
<b>Architectural glass</b>	Direct emission	tonnes carbon dioxide equivalent	59	130	193
	Indirect emission	tonnes carbon dioxide equivalent	121,918	139,637	135,358
	Total	tonnes carbon dioxide equivalent	121,977	139,766	135,550
	<b>Emission intensity</b>	<b>rounded to four decimal places</b>	<b>0.2147</b> tonnes carbon dioxide equivalent/tonne	<b>0.2224</b> tonnes carbon dioxide equivalent/tonne	<b>0.2222</b> tonnes carbon dioxide equivalent/tonne
<b>Total</b>	Scope 1 (Direct emission)	tonnes carbon dioxide equivalent	5,768,422	5,227,146	5,092,413
	Scope 2 (Indirect emission)	tonnes carbon dioxide equivalent	428,112	516,403	506,040
	<b>Total emission</b>	<b>tonnes carbon dioxide equivalent</b>	<b>6,196,534</b>	<b>5,743,550</b>	<b>5,598,453</b>
	Scope 3 <sup>2</sup>	tonnes carbon dioxide equivalent	5,620,383	/	/

- 1 The greenhouse gas data of 2024 announced by the Company have been verified and confirmed by Hong Kong Quality Assurance Agency on 8 October 2025.
- 2 The scope includes categories 4 and 9.

### 3. LOW-CARBON TRANSITION AND CLIMATE RESILIENCE

			2025	2024	2023
<b>Actual emissions of hazardous waste:</b>					
Float glass	Emission	Tonnes	488	355	207
	Emission intensity	rounded to four decimal places	<b>0.0505</b> kg/tonne	<b>0.0403</b> kg/tonne	<b>0.0240</b> kg/tonne
Automobile glass	Emission	Tonnes	113	58	64
	Emission intensity	rounded to four decimal places	<b>0.0016</b> kg/m <sup>2</sup>	<b>0.0008</b> kg/m <sup>2</sup>	<b>0.001</b> kg/m <sup>2</sup>
Architectural glass	Emission	Tonnes	143	148	108
	Emission intensity	rounded to four decimal places	<b>0.2514</b> kg/tonne	<b>0.2300</b> kg/tonne	<b>0.1778</b> kg/tonne
Living areas and office building	Emission	Tonnes	6	2	2
<b>Total</b>	<b>Total emission</b>	<b>Tonnes</b>	<b>750</b>	<b>563</b>	<b>381</b>
<b>Actual emissions of non-hazardous waste:</b>					
Float glass	Emission	Tonnes	655,512	508,200	505,031
	Emission intensity	rounded to four decimal places	<b>67.8673</b> kg/tonne	<b>57.0982</b> kg/tonne	<b>58.3700</b> kg/tonne
Automobile glass	Emission	Tonnes	123,171	96,957	75,692
	Emission intensity	rounded to four decimal places	<b>1.7074</b> kg/m <sup>2</sup>	<b>1.3724</b> kg/m <sup>2</sup>	<b>1.1841</b> kg/m <sup>2</sup>
Architectural glass	Emission	Tonnes	49,214	67,122	52,121
	Emission intensity	rounded to four decimal places	<b>86.6059</b> kg/tonne	<b>106.1164</b> kg/tonne	<b>85.4890</b> kg/tonne
Living areas and office building	Emission	Tonnes	20,914	28,422	24,583
<b>Total</b>	<b>Total emission</b>	<b>Tonnes</b>	<b>848,811</b>	<b>700,701</b>	<b>657,427</b>

### 3. LOW-CARBON TRANSITION AND CLIMATE RESILIENCE

			2025	2024	2023
<b>Energy consumption of our businesses<sup>3</sup>:</b>					
<b>Float glass</b>	Natural gas	MWH	16,594,913	15,335,400	15,073,800
	Fuel oil	MWH	18,621	13,700	14,700
	Electricity – direct energy consumption	MWH	904,567	774,000	776,000
	Electricity – purchased electricity	MWH	358,399	396,600	389,100
	Total	MWH	17,876,500	16,519,700	16,253,600
	<b>Consumption intensity</b>	<b>rounded to four decimal places</b>	<b>1.8510</b> MWh/tonne	<b>1.8745</b> MWh/tonne	<b>1.8785</b> MWh/tonne
<b>Automobile glass</b>	Natural gas	MWH	0	0	0
	Fuel oil	MWH	1,130	1,300	1,100
	Electricity – direct energy consumption	MWH	31,578	30,700	27,400
	Electricity – purchased electricity	MWH	319,992	308,200	290,700
	Total	MWH	352,700	340,200	319,200
	<b>Consumption intensity</b>	<b>rounded to four decimal places</b>	<b>0.0049</b> MWh/m <sup>2</sup>	<b>0.0048</b> MWh/m <sup>2</sup>	<b>0.0050</b> MWh/m <sup>2</sup>

- 3 The total energy consumption information of 2024 announced by the Company have been verified and confirmed by Hong Kong Quality Assurance Agency on 8 October 2025.

### 3. LOW-CARBON TRANSITION AND CLIMATE RESILIENCE

			2025	2024	2023
<b>Architectural glass</b>	Natural gas	MWH	0	0	0
	Fuel oil	MWH	253	400	700
	Electricity – direct energy consumption	MWH	9,563	9,100	8,800
	Electricity – purchased electricity	MWH	220,200	223,800	212,500
	Total	MWH	230,016	233,300	222,000
	<b>Consumption intensity</b>	<b>rounded to four decimal places</b>	<b>0.3872</b> MWh/tonne	<b>0.3688</b> MWh/tonne	<b>0.3641</b> MWh/tonne
<b>Living areas and office building</b>	Natural gas	MWH	500	700	200
	Fuel oil	MWH	112	100	100
	Electricity – direct energy consumption	MWH	435	400	600
	Electricity – purchased electricity	MWH	20,720	20,100	18,200
	Total	MWH	21,767	21,200	19,100
<b>By energy type</b>	Natural gas	MWH	16,595,413	15,336,100	15,074,000
	Fuel oil	MWH	20,116	15,900	16,600
	Electricity – direct energy consumption	MWH	946,143	814,200	812,800
	Electricity – purchased electricity	MWH	919,311	948,600	910,500
	<b>Total consumption</b>	<b>MWH</b>	<b>18,480,983</b>	<b>17,114,400</b>	<b>16,813,900</b>

### 3. LOW-CARBON TRANSITION AND CLIMATE RESILIENCE

			2025	2024	2023
<b>Total water replenished of our businesses<sup>4</sup>:</b>					
<b>Float glass</b>	Consumption	thousand tonne	9,792	9,273	8,967
	<b>Consumption intensity</b>	<b>rounded to four decimal places</b>	<b>1.0044</b> tonne/tonne	<b>1.0295</b> tonne/tonne	<b>1.0364</b> tonne/tonne
<b>Automobile glass</b>	Consumption	thousand tonne	529	397	280
	<b>Consumption intensity</b>	<b>rounded to four decimal places</b>	<b>0.0073</b> tonne/m <sup>2</sup>	<b>0.0056</b> tonne/m <sup>2</sup>	<b>0.0044</b> tonne/m <sup>2</sup>
<b>Architectural glass</b>	Consumption	thousand tonne	308	232	305
	<b>Consumption intensity</b>	<b>rounded to four decimal places</b>	<b>0.5411</b> tonne/tonne	<b>0.5102</b> tonne/tonne	<b>0.4994</b> tonne/tonne
<b>Living areas and office buildings</b>	Consumption	thousand tonne	790	749	922
<b>Total</b>	<b>Total consumption</b>	<b>thousand tonne</b>	<b>11,417</b>	<b>10,742</b>	<b>10,474</b>
<b>Packing wooden cases used in our businesses:</b>					
<b>Float glass</b>	Consumption	tonne	30,964	29,200	32,900
	<b>Consumption intensity</b>	<b>rounded to four decimal places</b>	<b>0.0032</b> tonne/tonne	<b>0.0033</b> tonne/tonne	<b>0.0038</b> tonne/tonne
<b>Automobile glass</b>	Consumption	tonne	46,903	47,100	43,600
	<b>Consumption intensity</b>	<b>rounded to four decimal places</b>	<b>0.0007</b> tonne/m <sup>2</sup>	<b>0.0007</b> tonne/m <sup>2</sup>	<b>0.0007</b> tonne/m <sup>2</sup>
<b>Architectural glass</b>	Consumption	tonne	21,066	23,500	20,500
	<b>Consumption intensity</b>	<b>rounded to four decimal places</b>	<b>0.0370</b> tonne/tonne	<b>0.0371</b> tonne/tonne	<b>0.0337</b> tonne/tonne
<b>Total</b>	<b>Total consumption</b>	<b>tonne</b>	<b>98,933</b>	<b>99,800</b>	<b>97,000</b>

- 4 As the water consumed by the Group has been recycled in circulation continuously, a portion of it evaporated during the recycling process in each year, the above and previous date refers to the amount of water replenished in the current year.

## 4. CREATING A PEOPLE-CENTRIC, DIVERSITY-RESPECTING AND INCLUSIVE WORKPLACE

Xinyi Glass firmly believes that **talents are the most valuable asset of an enterprise**. We are committed to going beyond legal compliance to establish a fair, safe, and inclusive work environment, ensuring that the dignity and rights of every employee are fully respected, with a special focus on **empowering women and ensuring the equal development of diverse ethnic groups**.

### From Legal Compliance to Institutional Safeguards

We embed respect for fundamental human rights at the core of our operations. In China, we strictly abide by the "Labor Law", "Law on the Protection of Women's Rights and Interests", and other laws; In Malaysia, it is fully enforced in accordance with the local "Labor Code". On this basis, we will prohibit the use of child labor and prohibit any form of forced or compulsory labor in the Group's "Recruitment Management Procedure" and the global "Employee Handbook" and establish a firewall from the source of recruitment. All labor contract conclusions, terminations, compensation and benefits, and dispute resolution are based on an open and transparent system to ensure that the rights and interests of more than 16,057 full-time employees around the world are protected equally and consistently.

All the industrial parks of Xinyi Glass in the PRC have complied with the relevant Labour laws and regulations such as the Labour Law of the People's Republic of China, the Labour Contract Law of the People's Republic of China, the Social Insurance Law of the People's Republic of China, the Law of the People's Republic of China on Protection of Minors and the Law of the People's Republic of China on Protection of Women's Rights and Interests, and in Malaysia Industrial Park has complied with the Malaysian Labour Laws as the basis for handling the entering into and termination of Labour contract, Labour compensation, Labour dispute settlement, social insurance premium payment, social insurance benefits, social insurance dispute settlement and so on.

While developing the Recruitment Management Procedure, the Group strictly complies with the Labour Law of the People's Republic of China, the Provisions on the Prohibition of Using Child Labour, the Law of the People's Republic of China on Protection of Minors and the Malaysian Labour Laws and the local legal requirements in the places where its businesses are located. For example, the Recruitment Management Process and the Malaysian Personnel Management System – Recruitment stipulate the division of labour in the Company's recruitment management process. Recruitment channels mainly include campus recruitment, recruitment through intermediaries, internal staff recommendation, etc. Internal guidelines have been established for all kinds of recruitment to ensure that all people are given a fair opportunity to apply for the jobs, in which suitable candidates are hired. The Group prohibits the use of Child Labour or Forced Labour. At the time of recruitment, the Group's recruitment team will review the resumes, cover letters and ID cards. When reviewing the resume of a job seeker, the educational background, working experience, and overall background will be checked if they match the job requirements. When reviewing resumes, the recruitment team will observe the following points to ensure better screening of potential candidates, including reasons for changing jobs, term of service for former employers, etc. For new employees with tertiary education or above, the Group will check the authenticity of their qualifications through the inquiry platform and print out the results and file with their résumés for categorization. If there is any doubt, the recruitment team will check with the relevant government authorities. In case of any violation, the recruitment team has the right to suspend the next recruitment procedure and blacklist the related person to avoid him/her from entering the Company for job application next time. To ensure staff health and safety, Forced Labour is strictly prohibited, and no staff can start working before the completion of the relevant training.

In terms of dismissal, the internal Employee Handbook clearly explains the various situations in which the Group will terminate the labour contract and other handling methods, while the Personnel Management System and Malaysian Personnel Management System – Dismissal states the procedures which should be carried out by the Group or the responsible executor, and the right of the affected employee upon the termination of labour contracts, so as to ensure that the Group treats each employee equally.

**The Group's Commitment to Recruitment:**

As a company with a strong sense of social responsibility, Xinyi Glass bears the important responsibility of safeguarding employee rights and promoting social harmony and stability.

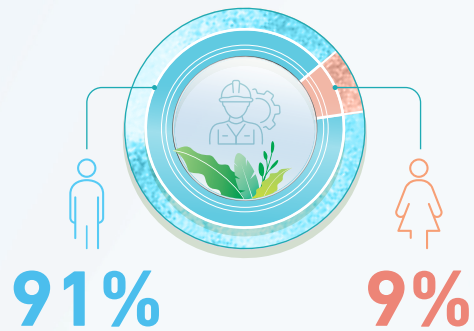
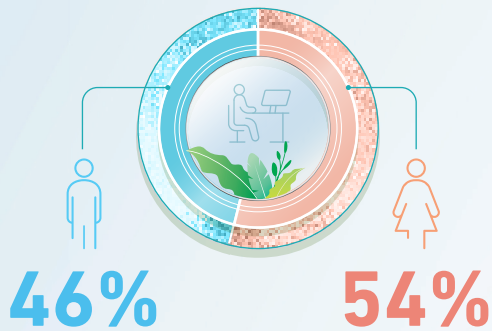
We strictly comply with national laws and regulations and fully respect the wishes and choices of our employees:

1. We do not use any form of coercion, threats, inducements, or other means to require employees to perform work against their will.
2. We absolutely do not engage in forced labor or employ child labor.
3. We provide employees with a safe, healthy, fair, and non-discriminatory work environment and fully safeguard employees' legitimate rights and interests.



**Clerical employees**

**Production employees**



No part-time employees are employed in 2025, and all are full-time employees. As of 31 December 2025, the total number of employees was 16,057. Male and female proportion for the current year was classified based on civilian and production employees: the gender ratio for civilian employees is 46% male and 54% female, respectively, while as for production employees, the gender ratio is 91% male and 9% female, respectively.

The Group places importance on diversity and fair treatment, employing approximately 6% ethnic minority employees in the PRC, which is close to the overall proportion of ethnic minorities in the PRC, while the majority of personnel in our overseas industrial parks are local nationals, with local employees from that country accounting for over 75% of our workforce. We respect local cultures and endeavour to provide employment opportunities for the local people.

#### 4. CREATING A PEOPLE-CENTRIC, DIVERSITY-RESPECTING AND INCLUSIVE WORKPLACE

Most of the employees belonged to the 31-40 age group, accounting for 39%, followed by the 41-50 age group, representing 30%. Distributions by geographical region were 53% and 47% for local and non-local employees respectively.

Employee Composition in 2025			
Type		Percentage	Changes compared to 2024
Clerical employees	Male	46%	-1 percentage point
	Female	54%	+1 percentage point
Production employees	Male	91%	0 percentage point
	Female	9%	0 percentage point
Ethnic minorities <sup>1</sup>		6%	0 percentage point
Local employees <sup>2</sup>		75%	-4 percentage points
By age	30 or below	20%	-1 percentage point
	31-40	39%	0 percentage point
	41-50	30%	0 percentage point
	51-60	11%	+1 percentage point
	61 or above	0%	0 percentage point
By geographical region	Local	53%	+11 percentage points
	Non-local <sup>3</sup>	47%	-11 percentage points
by rank	Senior Management	1%	0 percentage point
	Employees accredited with titles	6%	0 percentage point
	Normal employees	93%	0 percentage point

<sup>1</sup> For employees recruited for factories set up in the PRC, calculating based on "ethnic minorities" (i.e. other than Han Chinese), the number of all ethnic minority employees/the number of all employees in the PRC × 100%

<sup>2</sup> For employees recruited for factories set up overseas, calculating based on "local employees", i.e., the number of all local employees/the number of all overseas employees × 100%

<sup>3</sup> In the case of the Shenzhen Industrial Park, employees from outside Guangdong are counted as "non-local" employees

#### 4. CREATING A PEOPLE-CENTRIC, DIVERSITY-RESPECTING AND INCLUSIVE WORKPLACE

The full-year employee turnover rate was approximately 27%<sup>4</sup>, with an increase of 7 percentage points for both male and female employees. By age, the group aged 30 or below, rising by 14 percentage points as compared with the previous year; by geographical region, the rate increased by 7 percentage points for both local and non-local employees; and by rank, the rate increased most significantly among general staff, rising by 7 percentage points. For details, please refer to the table below:

Turnover rates of employees in 2025			
Type		Percentage	Changes compared to 2024
By gender	Male	27%	+7 percentage points
	Female	25%	+7 percentage points
By age	30 or below	50%	+14 percentage points
	31-40	27%	+6 percentage points
	41-50	17%	+5 percentage points
	51-60	11%	+6 percentage points
	61 or above	38%	-2 percentage points
By geographical region	Local	24%	+7 percentage points
	Non-local	29%	+7 percentage points
By rank	Senior Management	1%	0 percentage point
	Employees accredited with titles	4%	+1 percentage point
	Normal employees	28%	+7 percentage points

<sup>4</sup> Turnover rate by each category = number of employees resigned in such category/total number of employees in such category × 100%

### From Localized Hiring to Fair Treatment

We adhere to the employment philosophy of “not evaluating ability based on diplomas, not comparing contributions based on qualifications”, and ensure fairness through the system. In terms of pay equity, the Group has established a unified remuneration and welfare system to ensure equal pay for equal work. According to 2025 data, the proportion of female employees who have obtained internal professional titles will be 10%, an increase of 1 percentage point from last year and higher than the 6% of male employees, demonstrating that women have gained equal opportunities for competition and recognition in their career development. The average overall salary of female employees is similar to that of male employees, and the average salary of some categories is even higher than that of men in the same category.

In terms of development channels, through the “Internal Evaluation Title Management System” and the “Patent Award System”, we provide a clear and fair professional promotion path for all employees, especially female employees.

Xinyi Glass has set up procedures such as the Remuneration Management and Adjustment Procedure for the Group, Remuneration Formulation and Accounting Procedure and Malaysian Personnel Management System – Remuneration, providing the employees with attractive remuneration and benefits. Staff’s remuneration package, comprised of basic salary, rewards and accountabilities, is adjusted for factors such as the Company’s results, the value of the employee’s position, personal competency and performance, and social development level, etc. At the same time, the Group provides them with meal allowances, housing benefits, subsidies for high temperature, transportation and communication allowances. Remuneration and benefits are calculated by the same means regardless of employees’ gender, age group and ethnicity, so that all employees may enjoy similar average pay and company benefits.

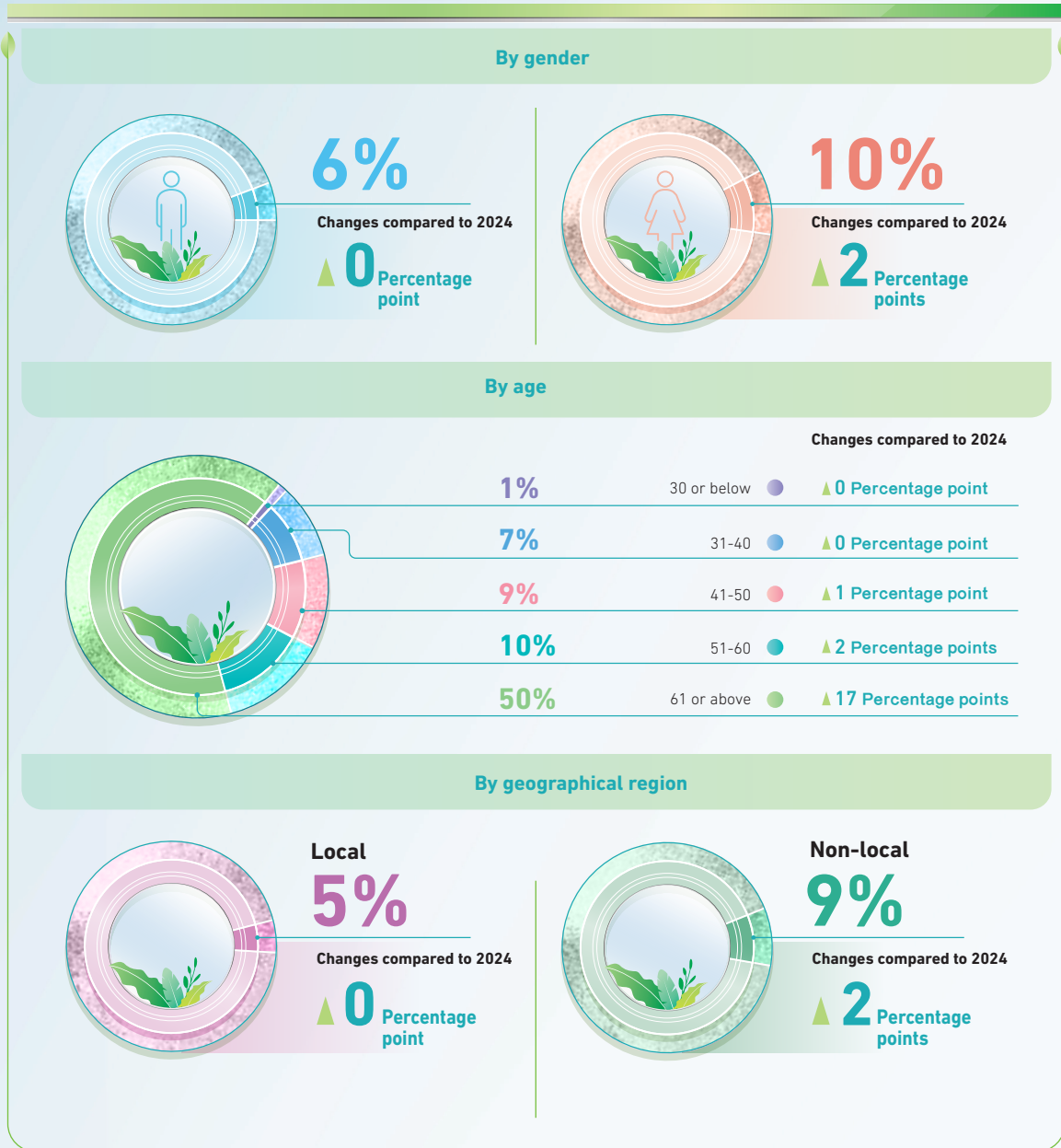
In addition to formulating the Personnel Management System and the Promotion/Demotion Management Procedure as the internal guidelines for general talents management, the Group has established reward systems such as Management System for the Internal Title Accreditation of the Group, Patent Reward System and Incentive Scheme to encourage professional personnel to study their business and enhance their skills. The internal title accreditation is carried out once a year. Upon the submission of materials and review on the daily performance, the employees are broadly divided into three levels, junior, middle and senior, so that the employees with adequate experience and capability will be actively provided with the same level of benefits. Staff members who have been internally accredited with titles, managerial duties and titles, or the long-service employees or specially recruited staff members are entitled to the Company’s share options.

Employees accredited with titles accounted for 7% of the overall workforce in 2025, consistent with the previous year. Male employees accredited with titles accounted for 6% of their gender, while female employees accredited with titles accounted for 10% of their gender, higher than that of male employees. By age, the 61 or above age group is with the highest proportion, representing 50% of the employees from this age group, followed by the 51-60 age group which accounted for 10% of that age group. The proportion of non-local employees was higher than that of local employees by 4 percentage points, accounting for 9% of the non-local group.

This demonstrated that the Group takes a fair view of each employee when awarding titles, not affected by gender, geographical region and age.

## 4. CREATING A PEOPLE-CENTRIC, DIVERSITY-RESPECTING AND INCLUSIVE WORKPLACE

### Particulars of Employees Accredited with Titles or Senior Management in 2025



The Group has contributed to the social insurance and purchased work-related injury insurance for employees in accordance with the Social Insurance Law of the People's Republic of China and the Regulation on Work-Related Injury Insurances.

## 4. CREATING A PEOPLE-CENTRIC, DIVERSITY-RESPECTING AND INCLUSIVE WORKPLACE

Xinyi Glass strictly complies with working hour limit and holiday requirements under the Labour Law of the People's Republic of China, the Employment Ordinance, the Regulation on Public Holidays for National Annual Festivals and Memorial Days, Provisions of the State Council on Employees' Working Hours, Law on the Protection of Women's Rights and Interests, Implementation Measures for Paid Annual Leave for Employees of Enterprises, the Malaysian Labour Laws – Working Hours as well as the respective applicable employment laws and regulations in the overseas locations and the legal requirements of the places in which it operates. All industrial parks in China implement an eight-hour working system from Mondays to Fridays with weekend off, while production departments implement a shift system with each shift of eight hours. Employees enjoy statutory holidays and paid leaves, such as marriage leave, funeral leave, maternity leave, and paternity leave, etc.

### Other benefits (extract):

<b>Children's Education Fund:</b>	For employees who have reached the required length of service, the Company provides an annual award of 4,000 yuan for each child enrolled in a full-time undergraduate program or higher.
<b>Food subsidies:</b>	The Company provides canteen meals and gives a certain meal allowance.
<b>Subsidies for high temperature:</b>	A high-temperature allowance is paid each summer in accordance with local government regulations.
<b>Health care:</b>	Employees of working age and seniority are entitled to a free medical check-up once a year.
<b>Provision of accommodation:</b>	Upon joining the Company, employees are provided with free dormitories, single flats or double rooms (air-conditioning, Wi-Fi, TV, bathroom and 24-hour hot water) in the industrial park. Those who meet the requirements can also apply for family housing, and will be allocated a suite (two bedrooms with a living room/two bedrooms and two living rooms) and enjoy housing subsidies after promotion to managerial staff. Employees who stay in the Company are entitled to a certain amount of monthly utility subsidies.

To continuously improve the working and living environment of our staff and enhance their welfare and treatment, the Group conducts quarterly questionnaire questionnaires and scores on various aspects such as canteen, accommodation, security and environment, with a view to improving the relevant conditions and enhancing our employees' belonging of our staff to the Company. The relevant score will affect the performance of the responsible department and make the department pay more serious attention to the views of the questionnaire. The overall questionnaire scores for 2025 achieved the goal and are satisfactory with all sections scoring average 80 or above except for the canteen section, but we witness an improving score for the canteen which achieves a satisfactory level. In the meantime, during 2022, the "Xinyi Group Issue Inspection Group" has been set up, establishing a direct channel for all Xinyi staff and external units to provide their opinion and feedback, thus continuously enhancing the internal management and the responsibility of management personnel of the corporation, and to facilitate the efficient completion of each key projects, in order to build a better working environment.

### Empowering Women's Development

We are deeply aware that women are a key force driving progress in both society and business, and have fulfilled our commitment to "respecting women" through systematic policies.

With the comprehensive maternity and family support system, we not only grant our female employees the statutory maternity leave of 98 to 190 days, but also provide an additional one year of nursing leave to ensure a one-hour nursing break every day. In addition, we encourage male employees to share family responsibilities by offering 7 to 30 days of paternity leave, in order to promote a gender-equitable family culture through our policies.

To smooth out channels for employee career development, we firmly adhere to the principle of "selecting talent regardless of gender". According to data in 2025, the proportion of female employees obtaining internal professional titles was 10%, higher than the 6% for male employees, strong demonstrating that women have gained full recognition under a fair promotion mechanism. In administrative positions, the proportion of women (54%) has exceeded that of men, showcasing the wider participation of women in managerial and professional positions.

As for ongoing dedicated care initiatives, we organized special event on International Women's Day to continuously express our gratitude and respect for the contributions of our female employees.



### Special Event on International Women's Day



### Comprehensive Employee Care

We regard our employees as business partners and provide comprehensive support to enhance their sense of belonging and well-being. In order to offer comprehensive welfare protection, the Group makes full social insurance contributions for its employees in accordance with laws, purchase commercial insurance coverage for critical illness for employees with certain seniority, and have established a "Caring Fund" and the "Xinyi Education Fund" to alleviate employees' concerns about the future. In 2025, the three funds contributed over RMB 8.950 million in total, assisting 1,048 employees and their families, effectively alleviating urgent difficulties and education costs. In terms of democratic communication and work-life balance, the labor union conducts quarterly surveys, while the office organizes employee forums and maintains a President's Mailbox to ensure effective communication channels. The Group's labor union regularly organizes cultural, sports and family day events. In addition, well-equipped recreational and sports facilities are available within our industrial parks, fully supporting employees in achieving work-life balance.

Xinyi Glass cares about staff's social life after work. According to the Labour Union Management System and Malaysian Personnel Management System – Diversify set up by the Group, each industrial park has established a labour union, which possesses a complete structure with members including a chairperson, a treasurer, a coordinator, etc. Various groups have been set up under the union to ensure its orderly operation. Through transparent and democratic management, the labour union organises various activities that benefit the employees' well-being. Meanwhile, they also strengthen the communication between the Company and the employees as well as negotiating for the benefits to raise the employees' sense of belonging. In the past 12 months, there have been no major disputes or negotiations between employers and employees, and the labour union has always been concerned about the needs of its employees.

In response to the increasingly fast pace of life, Xinyi Glass encourages its staff to achieve work-life balance. The labour union organises medical check-ups for the eligible staff and holds various fun afterwork events such as entertainment and recreational activities including birthday party, football and basketball match, Chinese New Year celebration, National Day celebration, etc. At the same time, the Group organises an open day for family activities to integrate employees into the Group's culture. There are different cultural and daily facilities in the industrial parks, such as library, basketball court, football field, badminton court, snooker room, table tennis room, cyber cafe, TV room, karaoke room, fitness room, medical room, kiosk, tuck shop, staff canteen, etc. Investments in various kinds of facilities are expanded to well perform their maintenance and management, enriching life and enhancing the interaction of staff members outside the eight working hours.



### Events





The Caring Fund under each labor union is operated in accordance with the Caring Fund Management Code of the Group. Based on the main principles of “helping those in need but not the poor; transparency and openness; reporting to the superior level; collaborative decision-making”, the fund assists the staff and their families who are in need and shows the spirit of mutual support. In 2025, more than RMB 1.743 million was used, benefitting 227 employees.



Since the establishment of Caring Fund, more than RMB15.60 million has been disbursed and 2,404 employees have been benefited.

“Xinyi Education Fund” was established by the Group in 2017. Managed in accordance with the Xinyi Education Fund Management Code, the fund provides our employees’ children with education assistance. The results of the application are posted for one week. The fund paid more than RMB3.284 million and benefitted a total of 821 eligible children of our employees in the year of 2025. Since its establishment, the Education Fund has disbursed RMB17.15 million to 4,287 children of Xinyi employees, pursuing their dreams of going to university. More than 90 children of Xinyi employees are now working in Xinyi and have become members of Xinyi, realising a wonderful two-way journey.

Xinyi Education Fund in 2025	<b>Benefited children of the employees</b>
	821
	<b>Disbursement amount</b>
	RMB3.284 million

### Talents are Our Most Valuable Resources

Xinyi Glass is committed to “deploying”, “nurturing” and “retaining” human resources, which is an intangible asset of the Company. The Group adheres to the principle of “internal nurturing” and adopts the “rolling in and out” approach to carry out circular training, which means that once a reserve talent is lost, promoted, transferred, etc., the talent pool will be replenished in a timely manner, including the training plan for management cadres, the talent echelon construction plan, the multi-skilled workers cultivation plan and other plans. In addition to the development of nurturing plans and training programs, the Group also has a dynamic management of the reserve talent pool to determine whether the employee will be promoted through different assessments.

Furthermore, based on the internal Training Plan Management Procedure, the Group has established an annual training plan, which is mainly divided into internal lecturer training (which is taught by senior employees internally accredited with titles) and external training. It is managed according to two processes, namely Internal Lecturer Evaluation and Management Process and External Training Management Process, respectively.

In 2025, a number of training programmes were held on different topics, including:

Theme	Number of times
Anti-discrimination	6
Business Ethics (including Anti-Corruption)	123
Occupational Safety	750
Technology	921
Cyber and Information Protection	36
Environmental Protection and Energy Saving	52

## 4. CREATING A PEOPLE-CENTRIC, DIVERSITY-RESPECTING AND INCLUSIVE WORKPLACE

Diversified training content enables employees to acquire work-related knowledge as well as developing their personal ethics and character and nurturing their problem-solving abilities. The comprehensive training resources and the learning environment enable the staff to learn more efficiently, helping them to innovate constantly and preparing a pool of talents for future development.



### Training



## 4. CREATING A PEOPLE-CENTRIC, DIVERSITY-RESPECTING AND INCLUSIVE WORKPLACE

	Total number of training hours of employees	Total number of training programmes	Total amount of training
The Group in 2025	94,716 hours	3,522	RMB1.211 million

For the percentage distribution of each category, please refer to the diagram below:

Category	Employee Training in 2025		
	Percentage of trainees <sup>1</sup>	Total training hours	Average training hours <sup>2</sup>
<b>By gender</b>	Male	100%	85,617
	Female	97%	9,099
<b>By rank</b>	Senior management	76%	92
	Employees accredited with titles	97%	5,309
	Normal employees	100%	89,315

1 Employees by relevant category = number of employees trained in category x/employees in category x\* 100

2 Average training hours for the relevant category of employees = total training hours for the specific category of employees/number of employees in the specific category

### **Our industrial park in Dongguan successfully held a thematic seminar on “Upholding the Legal Bottom Line and Preventing Duty-Related Crimes”**



To enhance employees' legal awareness and build a strong line of defense against corruption, the office of our industrial park in Dongguan successfully held a thematic seminar on “Upholding the Legal Bottom Line and Preventing Duty-Related Crimes” on the evening of 30 October. Instructor Liu and Police Officer Chen from the Economic Crime Investigation Detachment of the Dongguan Municipal Public Security Bureau was specially invited to deliver the lectures. More than 120 employees from key positions in the industrial park proactively attended the seminar, including those from the finance department, materials management department, equipment department, quality control department, procurement team, office and the coating line of the production department.

During the seminar, drawing on years of experience in economic crime investigation, Police Officer Chen moved beyond rigid legal readings and focused on economic crimes prevalent in corporate settings, such as duty embezzlement, misappropriation of funds and bribery of non-state functionaries. Using typical real-life cases as examples, he skillfully explained the common methods used in duty-related crimes, their significant threats and the severe legal consequences. Each real-life case and profound lesson of individuals who fell into the clutches of the law due to greed served as a wake-up call for every employee present.

Instructor Liu stressed that the internal integrity of the enterprise is the cornerstone of high-quality development. The “Bring the Law to Enterprises” initiative launched by the Economic Crime Investigation Detachment of Dongguan aims not only to crack down on crimes in accordance with the law, but also to focus on establishing preventive measures and providing targeted legal education. This reflects proactive service and care at the source for businesses. He called on employees to enhance their awareness of the rule of law, cherish their career platforms, consciously resist temptations, and strive to understand, respect and abide by the law.

The seminar was rich in content and vivid in its use of case studies, achieving remarkable results. It not only effectively strengthened employees' understanding of the rule of law and their ability to prevent risks, but also fully demonstrated Xinyi's strong commitment and sense of responsibility to safeguard employees' career security and build a culture of integrity.

### Hold Fasting the “Safety” Bottom Line

#### Goal

To create a safe working environment and continuously reduce the lost time injury frequency rate each year.

Xinyi Glass proposes “safety is the overriding priority” rationale, and has formulated the Safety Management Manual, the Safety Management System, etc. as the internal operating procedures in accordance with the Law of the People’s Republic of China on Production Safety, the Law of the People’s Republic of China on the Prevention and Treatment of Occupational Diseases, the Measures for the Administration of Contingency Plans for Work Safety Incidents, the Regulation on Emergency Responses to Work Safety Accidents, the Occupational Safety And Health Act 1994, the Measures for the Administration of Withdrawal and Utilization of Safety Production Fund for the Enterprise, and other relevant laws in the various regions. Also, the Accident Reporting Process, the Work-related Injuries Handling Process and the Emergency Plan for Production Safety Accidents, Risk Identification and Assessment Report, Emergency Resource Investigation Report have been prepared after the occurrence of accidents.



Our industrial parks have obtained the certification of ISO45001 occupational health and safety management system.

### The Group is committed to safety in production:

**“Safety first, laws and regulations compliance, planning and coordination, hierarchical administration, local responsibilities, whole-staff participation, diligence to duty”**

1. Actively and proactively participating in production safety activities, receiving production safety education and training and job skills training, participating in emergency drills, mastering the production safety knowledge and production safety skills required for their jobs, and having the ability to prevent accidents and handle emergencies at the work sites
2. Strictly complying with the unit’s production safety rules and regulations and the operating procedures of the type of work, obeying the management, correctly wearing and using the labour protective equipment; strictly implementing the post responsibility system; with particular types of work being licensed to operate, not allowed to assign machinery and equipment to unlicensed persons to operate in the absence of mastery of the machinery, equipment performance and operating procedures, where operation at the post is banned; for those whose skills training do not meet the standards, they are not allowed to join the operation.
3. Seriously implementing the shift handover system, seriously performing well in the investigations of potential safety hazards, seriously checking whether the equipment and safety facilities of the posts are complete and intact before and during the shifts, and, if potential accidents or other unsafe factors are found, these should be immediately reported to the shift leaders or the person(s) in charge of the unit’s safety department
4. Properly using and maintaining the equipment and tools, caring and using properly all production equipment, tools, safety protection devices and fire-fighting equipment and facilities, not to operate in violation of regulations, and to persuade and stop others from violating the regulations, so as to achieve the ‘three no-harms’.
5. Having the right to refuse to carry out instructions that are against the rules and to report to the next level. When an emergency situation that directly endangers personal safety is detected, they have the right to stop the operation or evacuate the workplace after taking possible emergency measures, and not to take risks in the operation.
6. When an accident or major attempted accident occurs, this would be reported immediately to the supervisors. In the event of a major personal equipment accident, the scene would be protected, the injured would be secured promptly, and the leaders would be provided with investigation and analysis materials and evidence according to the original situation at the time of the accident.
7. Completing other production safety tasks assigned by the leaders.



ORGANIZATION STRUCTURE OF XINYI GLASS SAFETY COMMITTEE



In 2021, Xinyi Glass established Xinyi Glass safety committee (hereafter referred to as: Xinyi Glass safety committee) and its executive body, Xinyi Glass safety committee office (hereafter referred to as: Xinyi Glass safety committee office) in accordance with the Law of the People's Republic of China on Production Safety. We uphold the core management concept of "people-oriented, caring for life, cherishing health" based on the "red line" principle that safety is the overriding priority, and are committed to systematically improving workplace safety standards and effectively preventing and curbing the occurrence of production safety accidents.

The Safety Office takes full responsibility for the Company's safe production management and promotes implementation of work arrangement of Xinyi Glass safety committee and safety committee office. It is responsible for safety management on personnel within working scope and daily management on fire safety and occupational health. It keeps effective communication and coordination with local emergency management, fire safety management and occupational health management departments and safeguards investment in safe production and emergency management. In addition to conducting conclusion and deployment for current safe production work through regular meetings and seminars, it organizes and participates education, training, and emergency rescue drill of safe production. Meanwhile, it will patrol production situation of industrial park, put forward highest potential safety hidden dangers and correct those default operation. It will strictly supervise "three violations" and follow the principle of "four necessary focuses" (四不放過), to organize or participate in investigation and analysis, find out reasons and provide suggestions and improvement measures for relevant behaviors and problems.

The Group has established a rigorous tiered response and investigation mechanism for production safety incidents. Based on the direct economic losses caused by incidents (excluding work-related injuries) and work-related injuries, events are classified into levels ranging from Level I (minor) to Level V (exceptionally severe). For incidents reaching Level III (major), a dedicated officer from the Safety Office initiates an investigation and submits a report to management for confirmation. For incidents at Level IV or above, the head of the Safety Committee immediately sets up a cross-system, cross-functional independent investigation team to conduct a thorough investigation and gives the final advice.

#### 4. CREATING A PEOPLE-CENTRIC, DIVERSITY-RESPECTING AND INCLUSIVE WORKPLACE

The Group spares no effort in employees' personal protection and workplace safety. We provide employees in production workshops with necessary labor protection facilities and supplies, including safety helmets, dust masks, protective gloves and safety shoes. All industrial parks are equipped with clearly visible safety warning signs and labels. In specific risk areas, such as raw material workshops and the front end of furnaces, hazard notification boards are posted to provide information on occupational hazards such as dust and high temperatures, in order to strengthen risk warning. In addition, real-time monitoring systems and emergency response facilities have been installed in critical locations that are flammable, explosive, or contain hazardous substances, such as natural gas rooms and oil depots. For frequently used heavy auxiliary equipment such as overhead cranes and forklifts, the Group implements a strict regular inspection and testing system to ensure they remain in a safe and reliable operating condition.

In 2025, there were about **four** members in the safety office in each industrial park in average.

In 2025, **122** comprehensive and specialised emergency drills were held, and **495** on-site emergency response plan drills were conducted.

In 2025, there were **85,344** people participating in training sessions related to safety production and occupational health, totaling **1,319** hours, covering **100%** of employees.

In 2025, approximately **60%** of the safety-related personal performance was attributable to middle and senior management of the safety committee.

The percentage of principle business premises adopting employee health and safety risk assessments achieved **100%**.



Xinyi Glass regards employees' health as the cornerstone of the Group's sustainable development. To this end, we have established a comprehensive health and safety protection system that spans employees' entire careers and covers both physical and mental well-being.

We take a proactive approach to health protection by providing annual subsidized health check-ups for all employees. In addition, employees in positions exposed to specific occupational health risks are arranged to receive specialized occupational health examinations, enabling early screening and dynamic monitoring of health risks. To cultivate safety awareness, we have implemented a full-cycle education programme for all employees. All new hires must complete systematic pre-job three-level safety training and receive case-based safety awareness training on workplace accidents, establishing a strong sense of safety from the very beginning. Existing employees continuously learn from experience through regularly watching films on work safety accidents and participating in case study sharing sessions, ensuring that safety remains a top priority at all times.

To ensure that every employee is equipped to respond to emergencies, the Group organizes fire drills and various other emergency response exercises on a regular basis each year. Through real-life simulations, we enhance employees' capabilities on emergency response and their skills in self-rescue and mutual aid. At the same time, we are committed to creating a fundamentally safe working environment at the source. A strict comprehensive smoking ban is enforced across all office and production areas. We also continuously improve the cleanliness and comfort of our workplaces, striving to create a truly healthy, safe, clean and comfortable working home for every employee.

## 4. CREATING A PEOPLE-CENTRIC, DIVERSITY-RESPECTING AND INCLUSIVE WORKPLACE

	Work-related fatalities in 2025 <sup>1</sup>		
	2025	2024	2023
Number of people	0 person	4 persons	1 person
Percentage	0%	0.24%	0.06%

2025 Lost time injury frequency rate per a million working hours <sup>2</sup>	2024
1,339.2	1,624.5

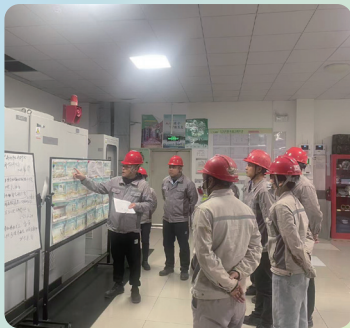
<sup>1</sup> Fatalities rate per 1,000 persons in work-related accidents = (Number of fatalities/average number of workers) × 1,000

<sup>2</sup> Lost time injury frequency rate per a million working hours = (Total lost working hours/actual total working hours) × 1,000,000

Actual total working hours = Number of workers × Actual working days × 8



### Safety



## 5. SAFEGUARDING AND MANAGING THE INTERNAL SUPPLY CHAIN

Xinyi Glass has developed and implemented the Procurement and Outsourcing Management System, the Supplier Integrity Agreement, the Supplier Delivery and Outer Packaging Management Process and the Supplier Development and Management Program, Supplier Freeze Management Process and other related processes for all potential and existing suppliers, all suppliers must be monitored by Supplier Management Process, while the existing processes are established based on ESG concepts and their non-quality system elements are being regularly assessed, which include system elements involving environmental elements. Among which the material suppliers of automobile glass are required to pass ISO9001 certification and the Group attaches increasing importance to green development and prefers to give priority to those with quality system, environmental system and other related certifications to ensure the normal operation of production, lowering the procurement cost and improve supply chain management, aiming to carry out standardized and professional procurement on the Group level to achieve resources sharing and the allocation of materials across the companies. All procurement activities involve the signing of agreements and contracts, and the performance of the contracts is strictly monitored, and the payment of funds is strictly controlled.

### Sustainable Supply Chain

#### Selection process for new suppliers

Potential suppliers are managed by the Supplier Development and Management Process. After receiving information on new suppliers, the procurement staff will conduct investigation, on-site audit, review and rectification, and development of sample presentation on the newly developed suppliers before they are finally included in the operation process of qualified suppliers.



#### Suppliers' commitments to the Group

The commitment rate of suppliers is 100%

All qualified suppliers are required to comply with the internal guidelines such as Supplier Management Process, Checklist for Quarterly Assessment for Suppliers and Standards on Regular Assessment on Qualified Suppliers, and are required to sign the Code of Conduct of Supplier to commit to the Company that they:

- 1) comply with all national laws
- 2) strictly forbid forced labour, including zero tolerance towards child labour and slavery
- 3) support the fair employment system, such as adopting non-discriminatory measures and salaries paid is up to or higher than the local standards
- 4) allow the freedom of association
- 5) establish a safe and healthy working environment
- 6) not involved in activities that infringe intellectual properties
- 7) refuse to use conflict minerals, forbidding the use of materials manufactured or procured from Congo or perpetual countries or regions
- 8) must sign the Supplier Integrity Agreement of the Company, and conflict of interests, corruption and bribery are forbidden
- 9) must sign the Green Procurement Agreement of the Company, and comply with the environmental protection and emission standards of different locations

## 5. SAFEGUARDING AND MANAGING THE INTERNAL SUPPLY CHAIN

Percentage of Supplier Integrity Agreements signed  
**100%**

Percentage of Green Procurement Agreement signed  
**28%**

Percentage of Trustworthy Operation Letter signed  
**100%**

Ratio of Response Letter to Xinyi Default List Management System signed  
**100%**



### Periodic assessment on suppliers

All qualified suppliers shall be internally assessed by various relevant departments based on six main criteria of competence, business, quality, delivery schedule, service and quality system, in order to regularly update the supplier list and monitor the quality and consumption of raw materials, accessories and other materials.



### Procedures on procuring from suppliers

According to the Procurement Management Process of the Company, during the procurement process, the procurement staff shall determine whether there are qualified suppliers meeting the material requirements, make inquiries with several suppliers from the qualified suppliers list that provide such materials, then list the strengths and weaknesses of these suppliers based on several criteria, and finally select the suitable suppliers and determine the purchase price. The contract (including the quotation) shall be submitted to the finance department to establish a procurement contract handover form with the finance department and shall also be signed by both parties for confirmation. If there is any change in the price, the supplementary agreement signed shall also be submitted to the finance department in accordance with the above requirement.



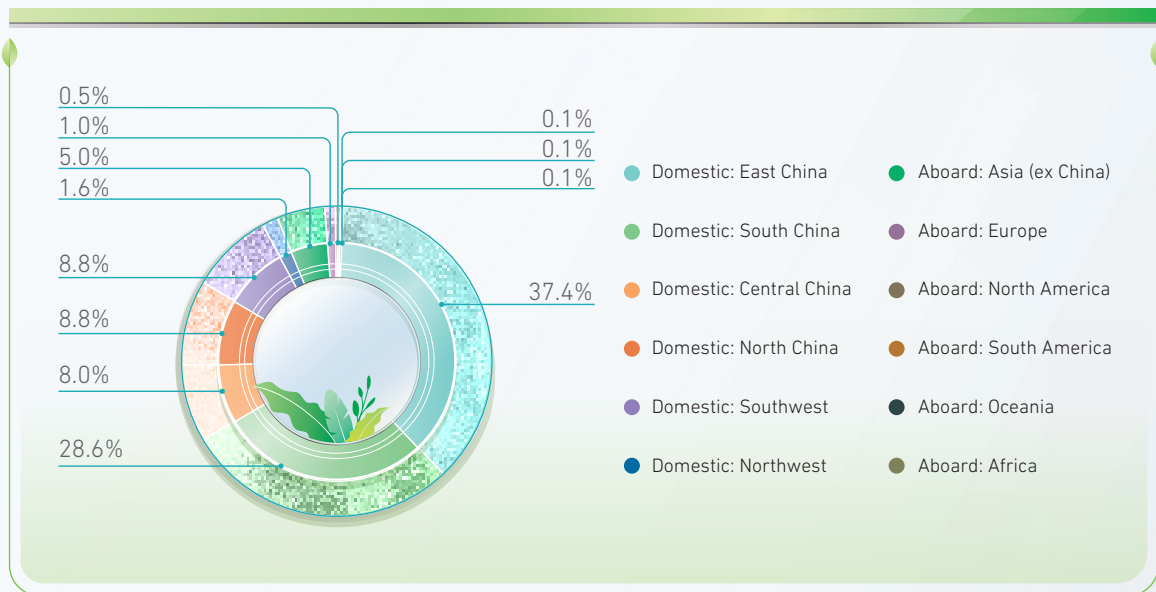
### Additional requirements to specific suppliers

If the purchased materials are toxic, hazardous, flammable and dangerous, they shall comply with the requirements of relevant laws and regulations. The Group intensifies its monitor on those suppliers that pose potential risks to the environment, including hardware suppliers, rubber suppliers and composite material suppliers, all of which may cause water and air pollution, and the relevant suppliers are required to provide IATF16949 and ISO14001 certifications on a regular basis to prove their compliance with environmental standards.

### A Transparent and Open Procurement Environment

As the Group aims to establish a sound anti-commercial bribery mechanism that remains effective in a long term, all existing and new suppliers are required to sign the Supplier Integrity Agreement. The Group is committed to establishing a transparent and fair procurement environment for suppliers, and suppliers are not allowed to engage in any form of bribery, and if it is found, the Group reserves the right to prosecute the relevant parties for commercial bribery offences. The Agreement also requires the supplier to undertake “not to bid” nor infringe the Group’s intellectual property rights. Meanwhile, the Agreement provides a variety of methods for reporting corruption and other activities in order to create a clean and fair environment.

In 2025, the Group’s suppliers were mainly domestic suppliers, accounting for 93%, while foreign suppliers accounted for 7%, the proportion of domestic suppliers has been decreased by 1% as compared to 2024. Both domestic and foreign suppliers will be screened and managed based on the above-mentioned procedures, and strict measures will be taken to ensure that all aspects of the supply chain are up to standard and safe.



## 6. ACTIVELY PARTICIPATING IN CHARITY ACTIVITIES AND GIVING BACK TO THE COMMUNITY

Since the foundation in 1988, Xinyi Glass proactively undertakes the responsibility of helping the poor and needy in the long term. The Company is committed to community and charity works, where its corporate value is striven to be brought into play. The Group makes donations enthusiastically in China for education, culture and health, transportation and environmental protection, poverty and disaster relief, social security, righteous and brave acts, etc. in philanthropy. As a member of the local community, Xinyi Glass always insists on the concept of giving back to society and plays an active role in public welfare undertakings. The Group has encouraged its staff to make positive contributions to public welfare, education, disaster relief and environmental protection with actions for the local communities. In accordance with the Management System of Request and Reporting formulated internally by the Group, the community organizations and activities on donation and sponsorship to be joined by each industrial park must be reported to the management committee of the Group or directors of the Company, and such activities could be joined only approval from management committee of the Group or directors of the Company is obtained. In 2025, the Group mobilized over 1,000 employees to participate in over 1,600 hours in community activities held by their Industrial Parks, including different types of activities such as Shenzhen Marathon, charity haircut events, Spring Festival visiting campaign, sports friendly match, flag selling day and anti-drug activities. In 2025, the Group made charitable donations of more than RMB10.864 million, and such funds were utilized on the Red Cross, poverty alleviation, school scholarships, disaster relief, and the Wang Fuk Court in Tai Po District, Hong Kong.

### Teachers and students from Mianyang Polytechnic visited our industrial park in Deyang for study tour



On 3 November, a total of 52 teachers and students majoring in materials engineering technology from Mianyang Polytechnic visited our industrial park in Deyang for a study tour. The visit was intended to help students expand their professional knowledge, develop an intuitive understanding of glass manufacturing, and promote the deep integration of theory and practice.

The Office manager in Deyang, extended a warm welcome to all the visiting teachers and students on behalf of the Company. Before entering the plant premises, office staff provided the teachers and students with a detailed explanation of site safety instructions and the visitation procedure. The teachers and students then split into two lines and entered the Deyang Industrial Park facility in an orderly manner, where they observed the float glass and the coated glass production lines.

During the visit, the teachers and students demonstrated a high level of learning enthusiasm and a rigorous attitude. Through close-up observation, the students gained a deeper understanding of the float glass production process, material selection and product quality inspection, accumulating valuable practical experience for their subsequent major courses study and career development. After the plant tour, they came to the Company's exhibition hall to watch the corporate video.

This exchange activity successfully established a practical platform for collaboration between the college and the Company, effectively helping students expand industry vision and solidify their expertise. At the same time, it further enhanced the engagement and influence of our industrial park in Deyang on social education and talent development.

## 6. ACTIVELY PARTICIPATING IN CHARITY ACTIVITIES AND GIVING BACK TO THE COMMUNITY



### Participating in charity activities



### Wuhu Xinyi Charity Foundation distributes academic scholarships for the year 2025 to 115 university students



In October, the Wuhu Xinyi Charity Foundation distributed academic scholarships for the year 2025 to 115 university students from Wuhu in accordance with its Articles of Association and Implementation Rules, with the amount totaling RMB575,000.

This scholarship programme strictly adhered to the principles of openness, fairness and impartiality, and a rigorous eligibility review and selection process was conducted to ensure that every charitable contribution was precisely delivered to students in genuine need.

In order to implement the spirit of the important instructions given by General Secretary Xi Jinping on children welfare, and to effectively address the financial difficulties faced by de facto orphaned children in pursuing their education, the Wuhu Xinyi Charity Foundation has continuously carried out a special university scholarship initiative under the theme of "Supporting Education, Shaping Character and Building Dreams" since 2021, with a level of funding amounting to RMB 5,000 per student per year.

As of this year, the Foundation has provided a total of 434 grants to de facto orphaned children with Wuhu household registration, distributing RMB2.17 million in scholarships. This has effectively alleviated the financial pressure on these children while attending university and helped them fulfil their aspirations for higher education.

### Respecting Local Voices to O-Creating a Sustainable Future

In Xinyi Glass's sustainable development blueprint, we firmly believe that true development must coexist harmoniously with local communities and the environment. We are not only committed to reducing our ecological footprint in our operations, but also regard **actively listening to, respecting and responding to the voices of residents and stakeholders of the place where our projects are located** as a core aspect of our corporate social responsibility. This commitment is not merely rhetorical; it is deeply embedded in our project decision-making processes. Recent public discussions concerning the Batam Eco City project in Indonesia present an opportunity for us to elaborate our position and principles.

#### Statement on the Batam Eco City Project in Indonesia: Listening takes Precedence Over Development, and Respect Serves as the Foundation for Decision-Making

We have noted that certain media reports have placed Xinyi Glass at the centre of the controversy surrounding the Batam Eco City project in Indonesia. In this regard, we wish to make the following clear: **Xinyi Glass is neither the developer nor the proponent of this Eco City project, nor has it ever participated in any of its specific development or construction activities.**

In the early conceptual stage of the project in 2023, relevant parties had very preliminary discussions with the Company. However, upon gaining an initial understanding of the potential impacts that the project may have on environment and society, particularly after hearing **the deep concerns expressed by local residents and environmental groups regarding the project's possible effect on mangrove ecosystems**, Xinyi Glass acted in accordance with its longstanding environmental principles and community respect policy and decided not to participate in and invest in this projects, or advance any substantive development of the project.

The allegation from certain external parties portraying us as the “primary culprit” is completely inconsistent with the facts. On the contrary, our decision not to participate in the project at an early stage precisely demonstrates our commitment to environmental and social responsibility through concrete action. We firmly believe that a prudent assessment of potential risks and a timely response to community voices are what any responsible enterprise should do. Regrettably, we did not disclose this decision in a timely manner, which led to public misunderstanding. We sincerely apologize for this and will improve our future communications.

### **A Testament to Longterm Principles: The Case of the Proposed Float Glass Production Line in Canada**

Our principle of respecting community voices is not an isolated case but a long-standing corporate commitment. Another example is the proposed float glass production line in Canada we announced in 2017. Although the project had commercial potential, we paid close attention to the **concerns raised by the local council and the community** in the course of advancing the project. After careful assessment, we ultimately respected the decisions made by the locals and did not proceed with the project.

This decision once again confirms our core commitment: **wherever we operate, we will prioritize the wishes and well-being of local communities**. We will not put commercial interests above community harmony and environmental protection.

### **Ongoing Communication: Transparency and Accountability**

Through the cases of Batam and Canada, we wish to clearly convey to all stakeholders that Xinyi Glass is a company that is willing to listen, ready to reflect and committed to acting responsibly. We may have been too low-key in our past communications, failing to proactively and promptly disclose the latest developments of our projects. Going forward, we will strengthen our transparency in this regard.

We will continue to uphold our belief in “**wherever we develop, we respect the local community**”, bringing community engagement to an earlier stage of project development. This will ensure that our business growth goes hand in hand with environmental protection and shared social prosperity to achieve sustainable value creation.

## 2025 AWARDED PRIZES (EXCERPT)

TIME OF AWARD	NAME OF AWARD/HONOUR	AWARDING BODY
January 2025	Hong Kong Golden Bauhinia	District Services and Community Care Development Fund (Sai Kung)
February 2025	Top 10 Excellent Award Management Team for Key Project Construction in 2024	The CPC Management Committee of Ma'anshan Economic and Technological Development Zone The Management Committee of Ma'anshan Economic and Technological Development Zone
February 2025	Enterprise with Tax Payment Exceeding RMB 40 Million	The People's Government of Bayuquan District, Yingkou
February 2025	Outstanding Contribution Award in 2025	The CPC Management Committee of Yangtze River International Metallurgical Industrial Park of Jiangsu The Management Committee of Yangtze River International Metallurgical Industrial Park of Jiangsu
February 2025	Output Contribution Award in 2025	The CPC Management Committee of Yangtze River International Metallurgical Industrial Park of Jiangsu The Management Committee of Yangtze River International Metallurgical Industrial Park of Jiangsu
February 2025	Outstanding Contribution Enterprise in Fixed Asset Investment in 2024	Chengmai County Committee of the Communist Party of China, People's Government of Chengmai County
February 2025	Top 10 Industrial Output Enterprise in 2024	Chengmai County Committee of the Communist Party of China, People's Government of Chengmai County
February 2025	5A-Level Party Organization in Emerging Sector in 2024	Chengmai County Committee of the Communist Party of China, People's Government of Chengmai County
March 2025	Outstanding Supplier in South China in 2024	China Construction Orient Decoration Co., Ltd.
March 2025	Corporate Headquarters in Shenzhen	Development and Reform Commission of Shenzhen Municipality
April 2025	Level 3 Conformity Certificate for Smart Manufacturing Capability Maturity Standard	BRICS Institute of Future Networks (Shenzhen, China)

## 6. ACTIVELY PARTICIPATING IN CHARITY ACTIVITIES AND GIVING BACK TO THE COMMUNITY

TIME OF AWARD	NAME OF AWARD/HONOUR	AWARDING BODY
April 2025	The 20th Brand List of AL-Survey Architectural Door, Window and Curtain Wall Industry 2024-2025 (Top 10 Preferred Brands for Architectural Glass)	Official Platform of the Door, Window and Curtain Wall Industry
April 2025	Top 50 Enterprises of Deyang in 2025	Deyang Enterprise Confederation (德陽市企業聯合會), Deyang Entrepreneurs Association
May 2025	AL-Survey "TOP 10" Preferred Innovative Material Certificate for the Real Estate and Door, Window & Curtain Wall Industry Chain (Architectural Glass Category) 2024-2025	Organising Committee of the National Real Estate and Door, Window & Curtain Wall Industry Development Conference (全國房地產與門窗幕牆產業發展大會組委會)
June 2025	Participated in the drafting of the industry standard "Technical Specification for Energy-Saving Diagnosis for Float Sheet Glass Enterprises"	Guojian Lianxin Attestation Center Co.,Ltd.
June 2025	Wuhu Top 10 Enterprise for University Graduate Recruitment	Talent Work Bureau of the CPC Wuhu Municipal Committee (中共蕪湖市委人才工作局) Wuhu Municipal Committee of Communist Youth League of China (中國共產主義青年團蕪湖市委員會)
June 2025	Advanced Unit in Energy Conservation Publicity	Hainan Energy Conservation and Emission Reduction Association
July 2025	2024 Top 100 Industrial Enterprise	Industry and Information Technology Bureau of Longgang District, Shenzhen (深圳市龍崗區工業和信息化局)
August 2025	China Customs Export Sample Enterprise for Trade Statistics Survey	General Administration of Customs of the People's Republic of China
September 2025	Top 50 Non-public Enterprises of Deyang	The Federation of Industry and Commerce of Deyang (德陽市工商業聯合會)
September 2025	Top 500 Chinese Enterprises in Manufacturing Industry 2025	Anhui Entrepreneurs Federation (安徽企業家聯合會)
October 2025	Enterprise Technology Centre of Chongqing	Chongqing Municipal Commission of Economy and Information Technology (重慶市經濟和資訊化委員會)

# APPENDIX 1: GRI INDEX

## Statement on Usage

Xinyi Glass has reported the information cited in the table of GRI content index for the period from 1 January 2025 to 31 December 2025 with reference to the GRI standards.

GRI Standards	Disclosure	Disclosure Standards
GRI 2: General Disclosures 2021	2-1 Organisational details	P.4-10
	2-2 Entities included in the organisation's sustainability reporting	P.2
	2-3 Reporting period, frequency and contact point	P.2-3
	2-5 External Assurance	P.56, 58
	2-6 Activities, value chain and other business relationships	P.4-10
	2-7 Employees	P.62
	2-8 Workers who are not employees	P.79
	2-9 Governance structure and composition	P.12-13
	2-10 Nomination and selection of the highest governance body	P.12-13
	2-11 Chair of the highest governance body	P.12-13
	2-12 Role of the highest governance body in sustainability reporting	P.12-13
	2-13 Delegation of responsibility for managing impacts	P.12
	2-14 Role of the highest governance body in sustainability reporting	P.12-13
	2-15 Conflicts of interest	P.20
	2-16 Communication of critical concerns	P.12-13
	2-17 Collective knowledge of the highest governance body	P.13
	2-19 Remuneration policies	P.13, 65

GRI Standards	Disclosure	Disclosure Standards
GRI 2: General Disclosures 2021	2-22 Statement on sustainable development strategy	P.11
	2-23 Policy commitments	P.62, 75
	2-24 Embedding policy commitments	P.62, 75
	2-26 Mechanisms for seeking advice and raising concerns	P.14-15, 22, 36, 62, 67
	2-27 Compliance with laws and regulations	P.20, 46, 61
	2-28 Membership associations	P.37
	2-29 Approach to stakeholder engagement	P.14-15
	2-30 Collective bargaining agreements	P.69
GRI 3: Material Topics 2021	3-1 Process to determine material topics	P.16-17
	3-2 List of material topics	P.16-17
	3-3 Management of material topic	P.16-17
GRI 201: Economic Performance 2016	201-1 Direct economic value generated and distributed	P.7
	201-2 Financial implications and other risks and opportunities due to climate change	P.38-40
GRI 203: Indirect Economic Impacts 2016	203-1 Infrastructure investments and services supported	P.82-85
GRI 205: Anti-corruption 2016	205-1 Operations assessed for risks related to corruption	P.21
	205-2 Communication and training about anti-corruption policies and procedures	P.20-21
	205-3 Confirmed incidents of corruption and actions taken	P.20-21

## APPENDIX 1: GRI INDEX

GRI Standards	Disclosure	Disclosure Standards
GRI 301: Materials 2016	301-1 Materials used by weight or volume	P.60
	301-2 Recycled input materials used	P.55
GRI 302: Energy 2016	302-1 Energy consumption within the organisation	P.58-59
	302-3 Energy intensity	P.58-59
	302-4 Reduction of energy consumption	P.51-53
GRI 303: Water and Effluents 2018	303-1 Interactions with water as a shared resource	P.53-54
	303-2 Management of water discharge-related impacts	P.53-54
	303-3 Water withdrawal	P.60
	303-4 Water discharge	P.60
	303-5 Water consumption	P.60
GRI 304: Biodiversity 2016	304-1 Operational sites owned, leased, managed in, or adjacent to, protected areas and areas of high biodiversity value outside protected areas	P.23-24
GRI 305: Emissions 2016	305-1 Direct (Scope 1) GHG emissions	P.56
	305-2 Energy indirect (Scope 2) GHG emissions	P.56
	305-3 Other indirect (Scope 3) GHG emissions	P.56
	305-4 GHG emissions intensity	P.56
	305-7 Nitrogen oxides (NOx), sulfur oxides (SOx), and other significant air emissions	P.55
GRI 306: Waste 2020	306-3 Waste generated	P.57
	306-4 Waste diverted from disposal	P.48-50
	306-5 Waste directed to disposal	P.48-50
GRI 308: Supplier Environmental Assessment 2016	308-1 New suppliers that were screened using environmental criteria	P.79

GRI Standards	Disclosure	Disclosure Standards
GRI 401: Employment 2016	401-1 New employee hires and employee turnover	P.62, 64
	401-2 New suppliers that were screened using environmental criteria Benefits provided to full-time employees that are not provided to temporary or part-time employees	P.67-70
GRI 403: Occupational Health and Safety 2018	403-1 Occupational health and safety management system	P.76
	403-2 Hazard identification, risk assessment, and incident investigation	P.75-77
	403-3 Occupational health services	P.78
	403-4 Worker participation, consultation, and communication on occupational health and safety	P.77
	403-5 Worker training on occupational health and safety	P.77
	403-6 Promotion of worker health	P.77
	403-7 Prevention and mitigation of occupational health and safety impacts directly linked by business relationships	P.77
	403-8 Workers covered by an occupational health and safety management system	P.75-76
	403-9 Work-related injuries	P.77
	403-10 Work-related ill health	P.77
GRI 404: Training and Education 2016	404-1 Average hours of training per year per employee	P.73
	404-2 Programs for upgrading employee skills and transition assistance programs	P.71
	404-3 Percentage of employees receiving regular performance and career development reviews	P.65-66
GRI 405: Diversity and Equal Opportunity 2016	405-1 Diversity of governance bodies and employees	P.12, 63
GRI 413: Local Communities 2016	413-1 Operations with local community engagement, impact assessments, and development programs	P.82
GRI 414: Supplier Social Assessment 2016	414-1 New suppliers that were screened using social criteria	P.79

## APPENDIX 2: ESG KPI INDEX OF SEHK

### ENVIRONMENT

INDEX NO.	INDEX REQUIREMENTS	SCOPE OF THIS REPORT
A1: EMISSION	<b>General Disclosure</b> Information on: (a) the policies; and (b) compliance with relevant laws and regulations that have a significant impact on the issuer relating to air and greenhouse gas emissions, discharges into water and land, and generation of hazardous and non-hazardous waste.	P.44-51
	A1.1 The types of emissions and respective emissions data.	P.55
	A1.3 Total hazardous waste produced (in tonnes) and, where appropriate, intensity (e.g. per unit of production volume, per facility).	P.57
	A1.4 Total non-hazardous waste produced (in tonnes) and, where appropriate, intensity (e.g. per unit of production volume, per facility).	P.57
	A1.5 Description of emission target(s) set and steps taken to achieve them.	P.44-48
	A1.6 Description of how hazardous and non-hazardous wastes are handled, and a description of reduction target(s) set and steps taken to achieve them.	P.48-51

ENVIRONMENT		
INDEX NO.	INDEX REQUIREMENTS	SCOPE OF THIS REPORT
A2: USE OF RESOURCES	<b>General Disclosure</b> Policies on the efficient use of resources, including energy, water and other raw materials.	P.51-55
	A2.1 Direct and/or indirect energy consumption by type (e.g. electricity, gas or oil) in total (kWh in `000s) and intensity (e.g. per unit of production volume, per facility).	P.58-59
	A2.2 Water consumption in total and intensity (e.g. per unit of production volume, per facility).	P.60
	A2.3 Description of energy use efficiency target(s) set and steps taken to achieve them.	P.51-53
	A2.4 Description of whether there is any issue in sourcing water that is fit for purpose, water efficiency target(s) set and steps taken to achieve them.	P.53-54
	A2.5 Total packaging material used for finished products (in tonnes) and, if applicable, with reference to per unit produced.	P.60
A3: THE ENVIRONMENT AND NATURAL RESOURCES	<b>General Disclosure</b> Policies on minimising the issuer's significant impact on the environment and natural resources.	P.23-30
	A3.1 Description of the significant impacts of activities on the environment and natural resources and the actions taken to manage them.	P.23-24

## APPENDIX 2: ESG KPI INDEX OF SEHK

ENVIRONMENT		
INDEX NO.	INDEX REQUIREMENTS	SCOPE OF THIS REPORT
B1: EMPLOYMENT	<b>General Disclosure</b> Information on: (a) the policies; and (b) compliance with relevant laws and regulations that have a significant impact on the issuer relating to compensation and dismissal, recruitment and promotion, working hours, rest periods, equal opportunity, diversity, antidiscrimination, and other benefits and welfare.	P.61-70
	B1.1 Total workforce by gender, employment type (e.g. full-or parttime), age group and geographical region.	P.62-63
	B1.2 Employee turnover rate by gender, age group and geographical region.	P.64
B2: HEALTH AND SAFETY	<b>General Disclosure</b> Information on: (a) the policies; and (b) compliance with relevant laws and regulations that have a significant impact on the issuer relating to providing a safe working environment and protecting employees from occupational hazards.	P.75-78
	B2.1 Number and rate of work-related fatalities in the last three years including the reporting year.	P.78
	B2.2 Lost days due to work injury.	P.78
	B2.3 Description of occupational health and safety measures adopted, and how they are implemented and monitored.	P.75-77
B3: DEVELOPMENT AND TRAINING	<b>General Disclosure</b> Policies on improving employees' knowledge and skills for discharging duties at work. Description of training activities.	P.72-74
	B3.1 The percentage of employees trained by gender and employee category (e.g. senior management, middle management).	P.73
	B3.2 The average training hours completed per employee by gender and employee category.	P.73
B4: LABOUR STANDARDS	<b>General Disclosure</b> Information on: (a) the policies; and (b) compliance with relevant laws and regulations that have a significant impact on the issuer relating to preventing child and forced labour.	P.61-62
	B4.1 Description of measures to review employment practices to avoid child and forced labour.	P.61
	B4.2 Description of steps taken to eliminate such practices when discovered.	P.61

SOCIAL

INDEX NO.	INDEX REQUIREMENTS	SCOPE OF THIS REPORT
-----------	--------------------	----------------------

Operating Practices

B5: SUPPLY CHAIN MANAGEMENT	<b>General Disclosure</b> Policies on managing environmental and social risks of the supply chain.	P.79-81
	B5.1 Number of suppliers by geographical region.	P.81
	B5.2 Description of practices relating to engaging suppliers, number of suppliers where the practices are being implemented, and how they are implemented and monitored.	P.79-80
	B5.3 Description of practices used to identify environmental and social risks along the supply chain, and how they are implemented and monitored.	P.79-80
	B5.4 Description of practices used to promote environmentally preferable products and service when selecting suppliers, and how they are implemented and monitored.	P.79-80
B6: PRODUCT RESPONSIBILITY	<b>General Disclosure</b> Information on: (a) the policies; and (b) compliance with relevant laws and regulations that have a significant impact on the issuer relating to health and safety, advertising, labelling and privacy matters relating to products and services provided and methods of redress.	P.31-37
	B6.1 Percentage of total products sold or shipped subject to recalls for safety and health reasons.	P.33
	B6.2 Number of products and service related complaints received and how they are dealt with.	P.33-34
	B6.3 Description of practices relating to observing and protecting intellectual property rights.	P.35-36
	B6.4 Description of quality assurance process and recall procedures.	P.33-34
	B6.5 Description of consumer data protection and privacy policies, and how they are implemented and monitored.	P.34-35

**SOCIAL**

INDEX NO.	INDEX REQUIREMENTS	SCOPE OF THIS REPORT
B7: ANTI-CORRUPTION	<b>General Disclosure</b> Information on: (a) the policies; and (b) compliance with relevant laws and regulations that have a significant impact on the issuer relating to bribery, extortion, fraud and money laundering.	P.20-22
	B7.1 Number of concluded legal cases regarding corrupt practices brought against the issuer or its employees during the reporting period and the outcomes of the cases.	P.21
	B7.2 Description of preventive measures and whistleblowing procedures, and how they are implemented and monitored.	P.22
	B7.3 Description of anti-corruption training provided to directors and staff.	P.21
<b>Community</b>		
B8: COMMUNITY INVESTMENT	<b>General Disclosure</b> Policies on community engagement to understand the needs of the communities where the issuer operates and to ensure its activities take into consideration the communities' interests.	P.82-84
	B8.1 Focus areas of contribution (e.g. education, environmental concerns, labour needs, health, culture, sport).	P.82
	B8.2 Resources contributed (e.g. money or time) to the focus area.	P.82

## APPENDIX 3: FEEDBACK ON THE REPORT

Thank you for reading this report. The Group sincerely invites you to fill in the following form, so that the Group can improve the quality of the reports in the future and provide more targeted contents for you, and give full play to the effectiveness of the 2025 Environmental, Social and Governance Report of Xinyi Glass.

You may directly fill in the following questionnaire or scan the QR code on P. 98 to submit online questionnaire.

1. Your rating for the completeness and clarity of the data disclosed in Part A - "Environmental" session of this report.  
(1 is the lowest, 10 is the highest)  
\_\_\_\_\_
2. Your overall rating for the related contents in Part A - "Environmental" session of this report.  
(1 is the lowest, 10 is the highest)  
\_\_\_\_\_
3. Your rating for the completeness and clarity of the data disclosed in Part B - "Social" disclosures of this report.  
(1 is the lowest, 10 is the highest)  
\_\_\_\_\_
4. Your overall rating for the related contents in Part B - "Social" session of this report.  
(1 is the lowest, 10 is the highest)  
\_\_\_\_\_
5. Your rating for the Group's performance of environmental and social responsibilities.  
(1 is the lowest, 10 is the highest)  
A:Environmental \_\_\_\_\_ B:Social \_\_\_\_\_ C:Governance \_\_\_\_\_
6. Please refer to Appendix 1 and 2: Reporting Guidance Index and indicate what you believe the most important to the Group.  
(1 is the lowest, 5 is the highest)

ANTI-CORRUPTION	
BUILDING A DIVERSE, FAIR AND INCLUSIVE WORKPLACE	
CUSTOMER PRIVACY	
CUSTOMER SERVICE	
EMERGENCY MANAGEMENT	
ENERGY CONSUMPTION	
ENERGY SAVING, EMISSION REDUCTION AND CLIMATE CHANGE RESPONSE	
GREEN PRODUCTS	
INTELLECTUAL PROPERTY RIGHTS	
PACKAGING MATERIALS	
PHILANTHROPY	
PRODUCT QUALITY	
OCCUPATIONAL HEALTH AND SAFETY	
STAFF CARE	
SUPPLY CHAIN MANAGEMENT	
SUSTAINABLE PROCUREMENT	
TALENT TRAINING	
WASTEWATER AND EMISSION MANAGEMENT	
WASTE MANAGEMENT	
WATER RESOURCES	
BIODIVERSITY	
OTHER (PLEASE SPECIFY)	

## APPENDIX 3: FEEDBACK ON THE REPORT

7. Any other comments on the Group's work on environmental, social and governance.  
\_\_\_\_\_
8. Any other comments on this report.  
\_\_\_\_\_
9. As a stakeholder of the Group, you are \_\_\_\_\_ °  
(a) a customer (b) the government (c) an investor/a shareholder (d) an employee  
(e) a partner (f) a resident living close to the industrial park (g) other: \_\_\_\_\_

After the completion of this form, please send back to:

**Xinyi Glass Holdings Limited, Investor Relations Department**

Address: 21st Floor, Rykadan Capital Tower, 135 Hoi Bun Road,  
Kwun Tong, Kowloon, Hong Kong

Tel: +852 3919 2888

Fax: +852 3919 2890

E-mail: [esgdepartment@xinyiglass.com.hk](mailto:esgdepartment@xinyiglass.com.hk)

Thank you for your valuable opinion!





**信義玻璃控股有限公司**  
**XINYI GLASS HOLDINGS LIMITED**